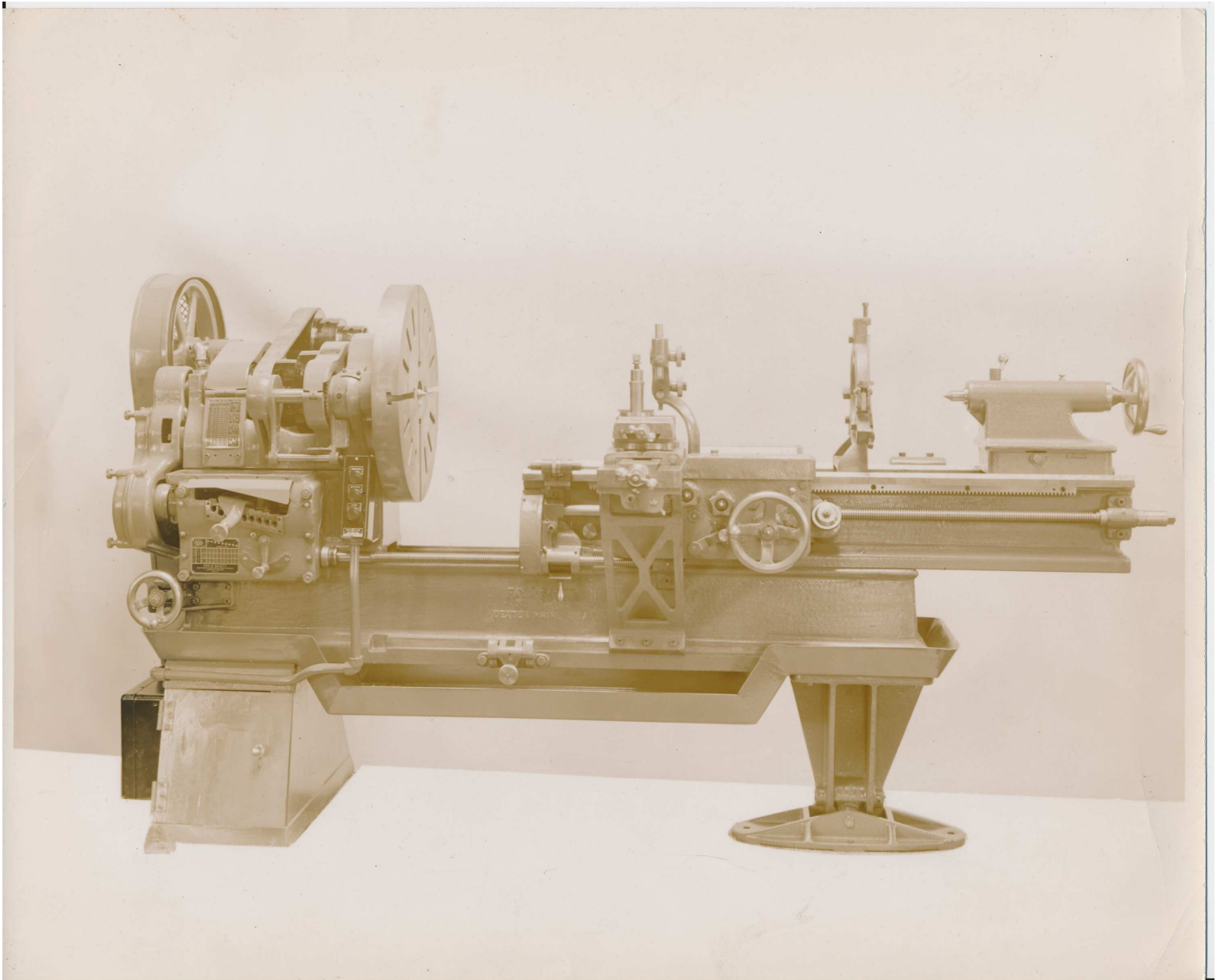


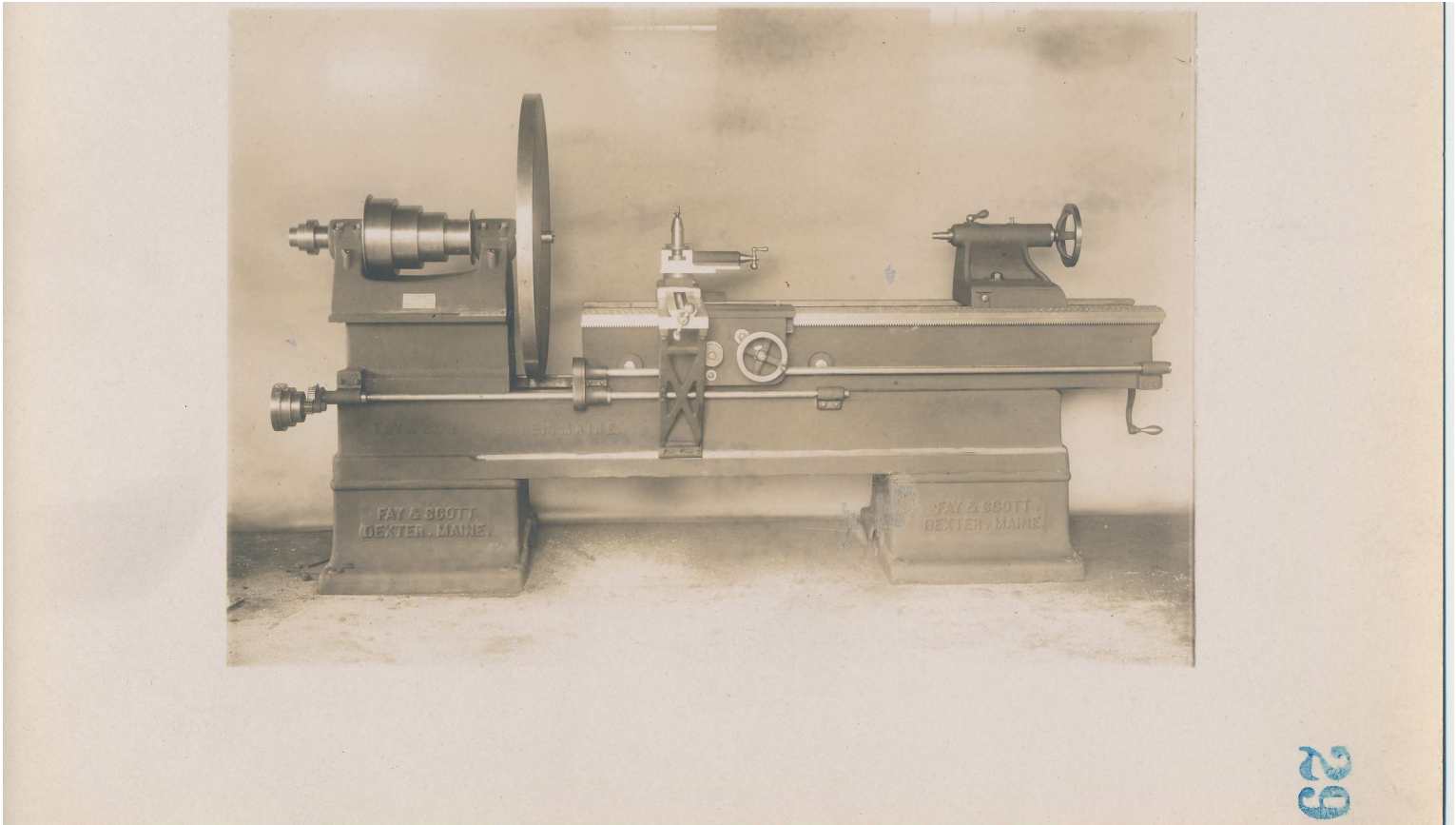
Fay & Scott, Dexter ME (Slide # 1, Image # 13127, Collection [Products - machine tools], tstamp [Wed Sep 12 13:28:14 EDT 2012])
No annotations

Original owned by Dexter Historical Society, Dexter Maine
Reproduced 6/2012 with permission
Duplication or use for commercial purposes prohibited



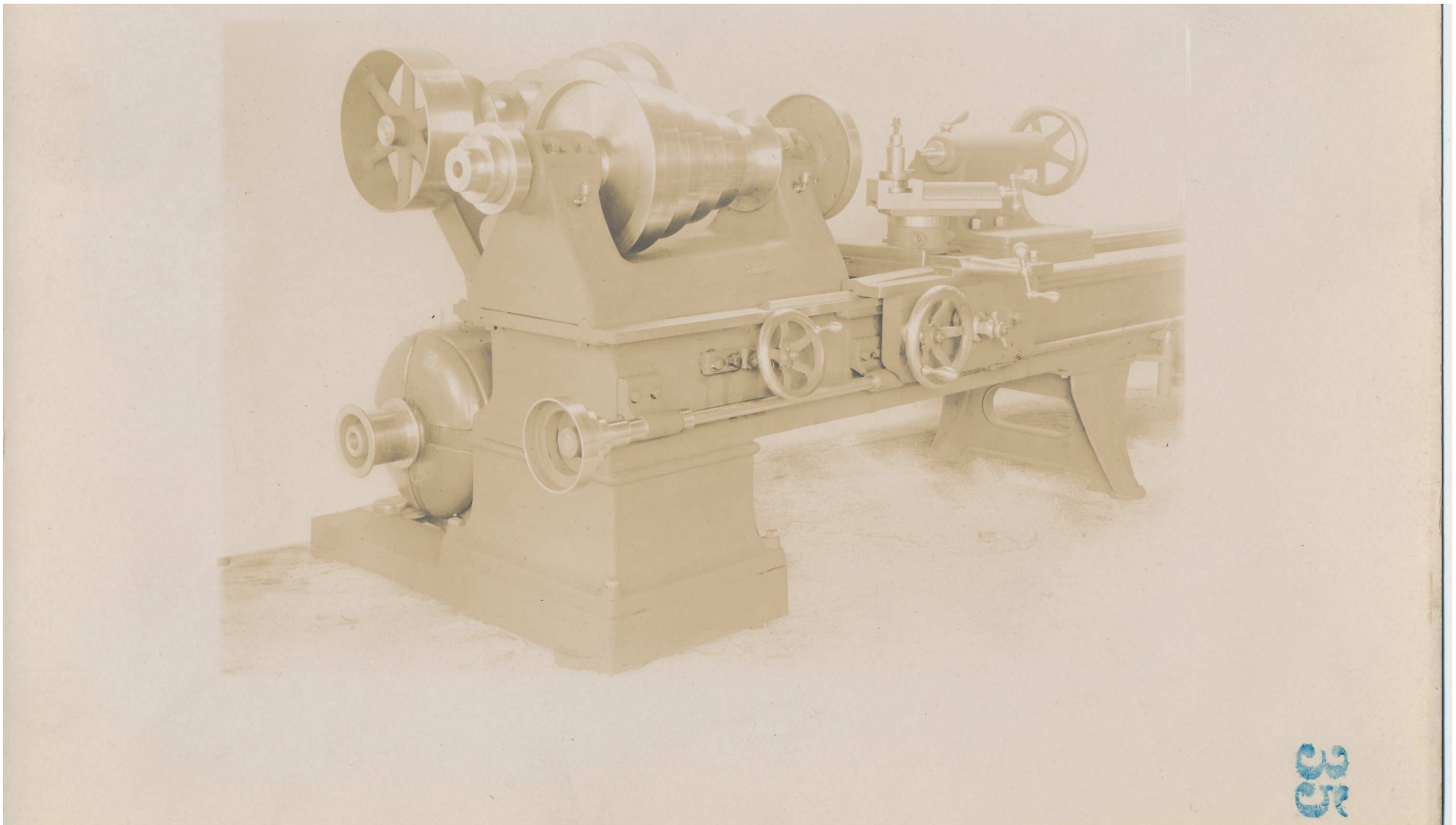
Fay & Scott, Dexter ME (Slide # 2, Image # 13128, Collection [Products - machine tools], tstamp [Wed Sep 12 13:28:14 EDT 2012])
No annotations

Original owned by Dexter Historical Society, Dexter Maine
Reproduced 6/2012 with permission
Duplication or use for commercial purposes prohibited



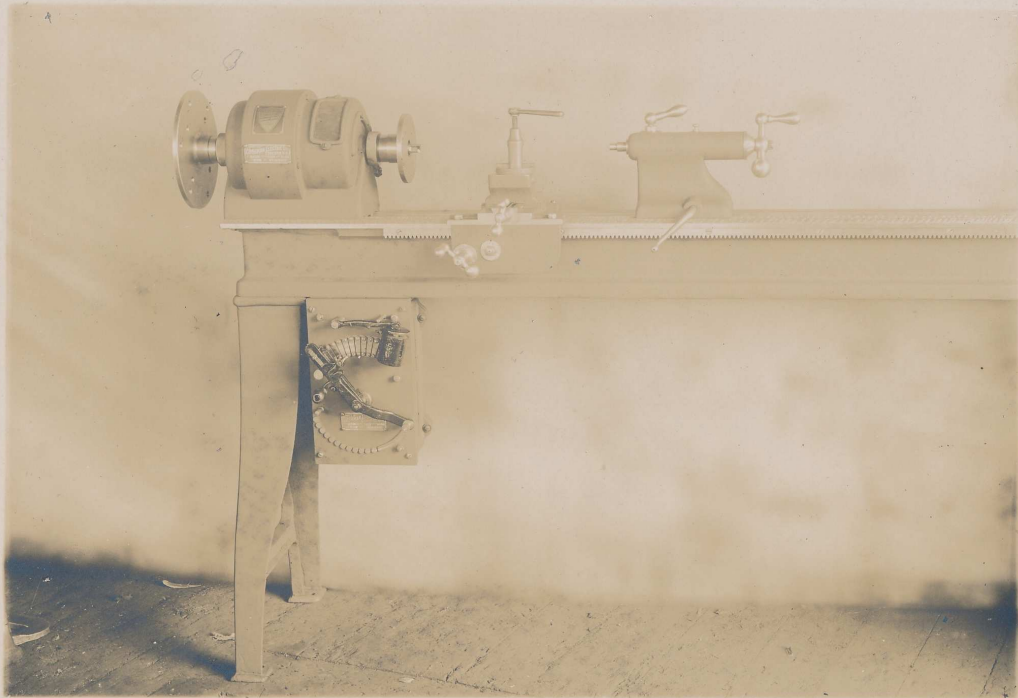
Fay & Scott, Dexter ME (Slide # 3, Image # 13129, Collection [Products - machine tools], tstamp [Wed Sep 12 13:28:14 EDT 2012])
No annotations

Original owned by Dexter Historical Society, Dexter Maine
Reproduced 6/2012 with permission
Duplication or use for commercial purposes prohibited

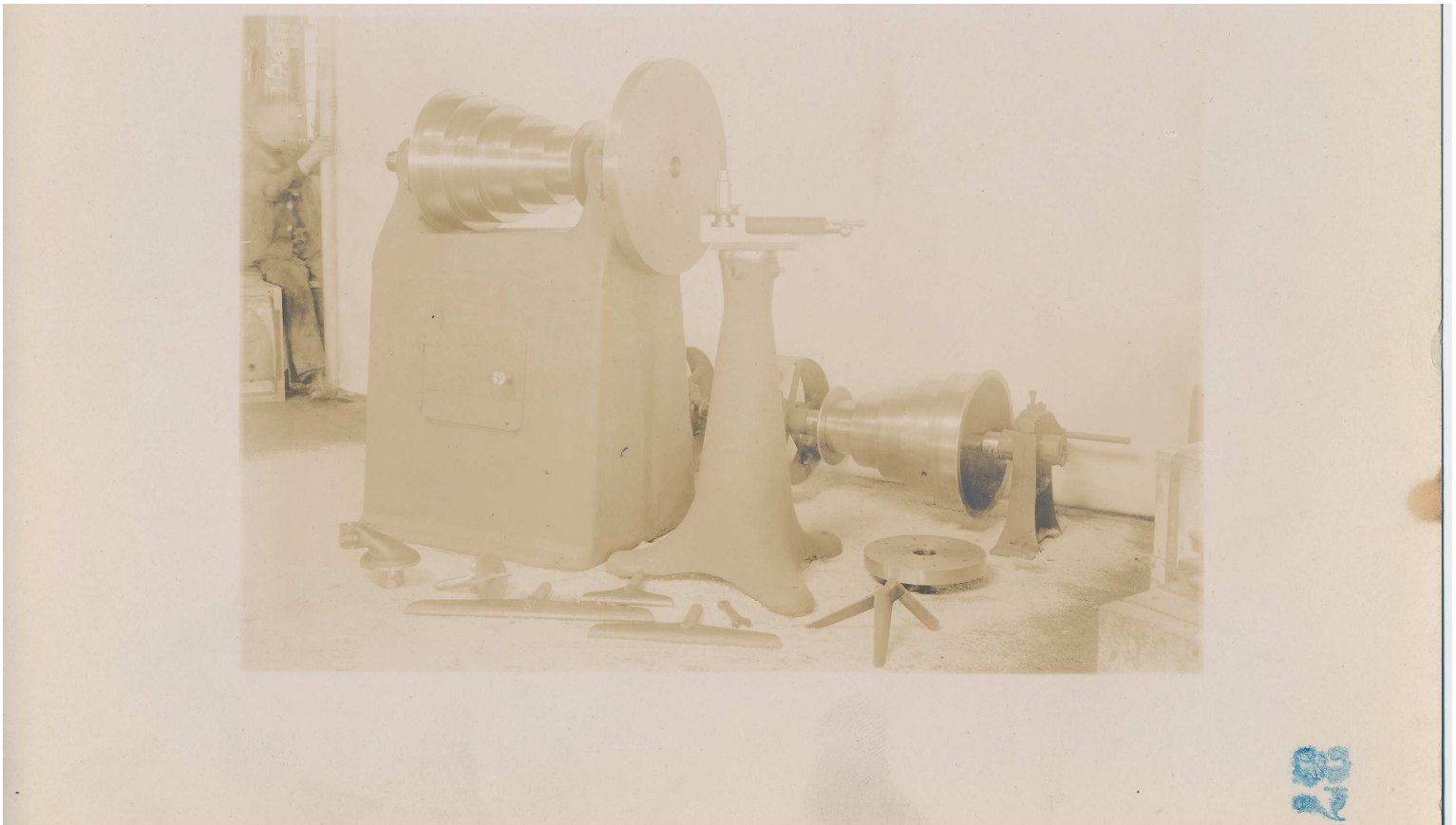


Fay & Scott, Dexter ME (Slide # 4, Image # 13130, Collection [Products - machine tools], tstamp [Wed Sep 12 13:28:14 EDT 2012])
No annotations

Original owned by Dexter Historical Society, Dexter Maine
Reproduced 6/2012 with permission
Duplication or use for commercial purposes prohibited

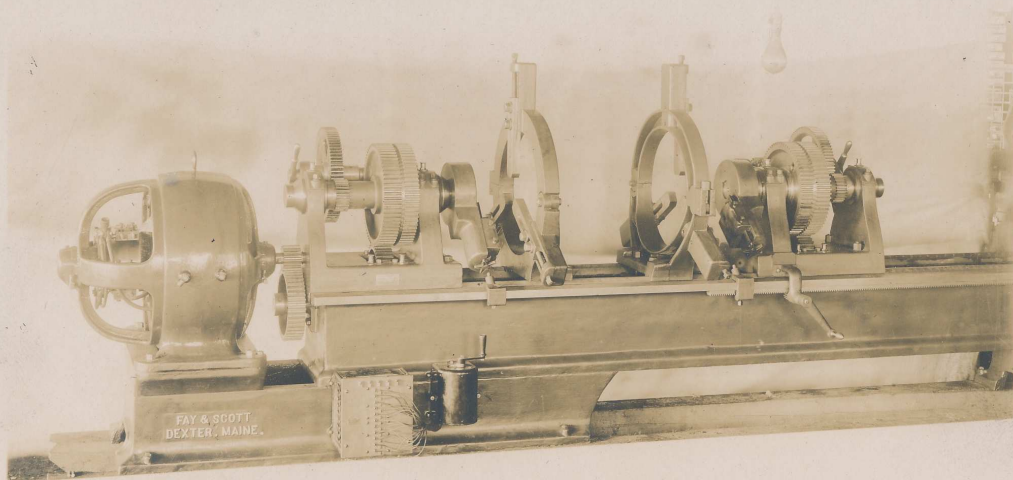


Fay & Scott, Dexter ME (Slide # 5, Image # 13131, Collection [Products - machine tools], tstamp [Wed Sep 12 13:28:14 EDT 2012])
No annotations

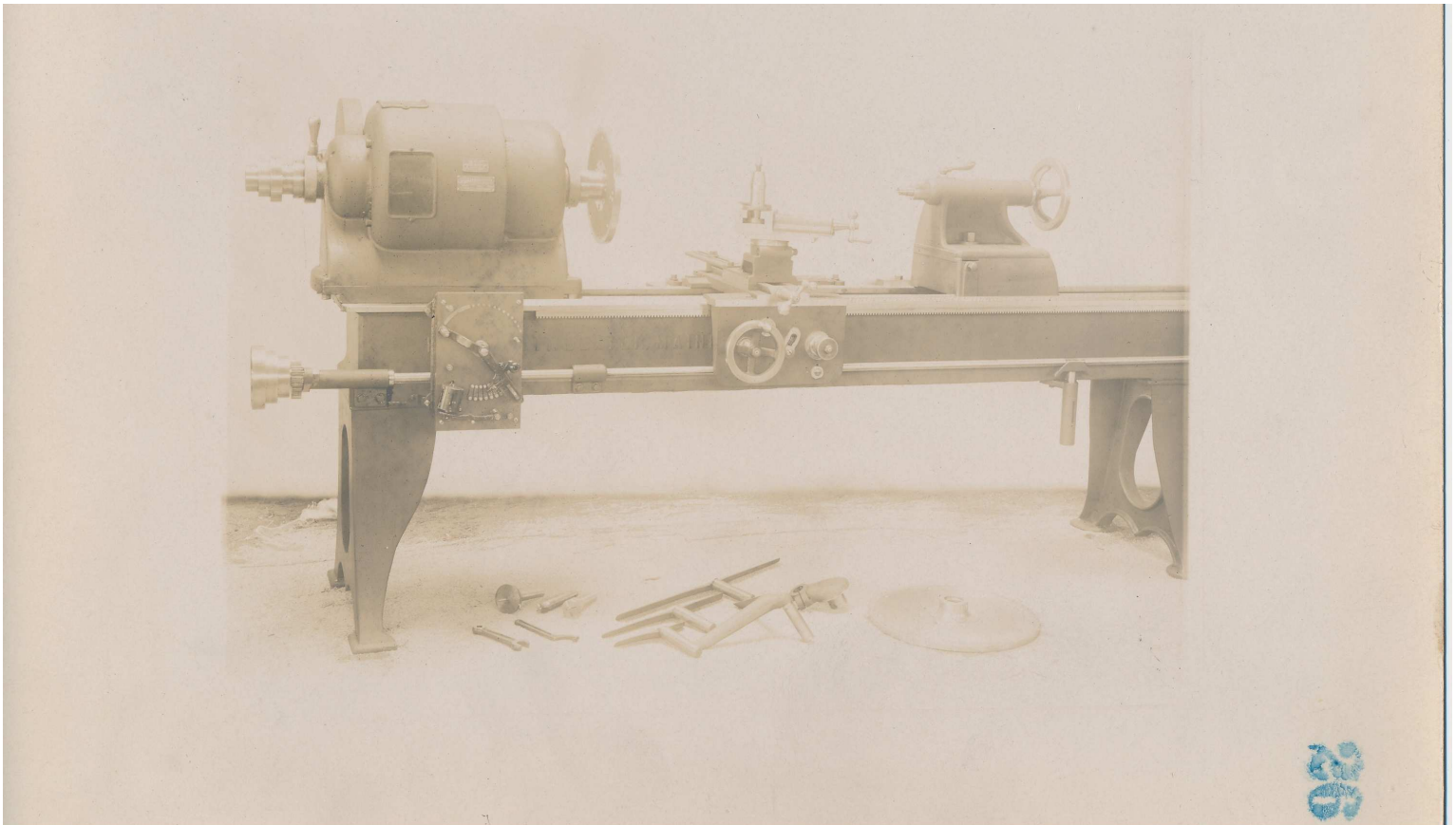


Fay & Scott, Dexter ME (Slide # 6, Image # 13132, Collection [Products - machine tools], tstamp [Wed Sep 12 13:28:14 EDT 2012])
No annotations

Original owned by Dexter Historical Society, Dexter Maine
Reproduced 6/2012 with permission
Duplication or use for commercial purposes prohibited

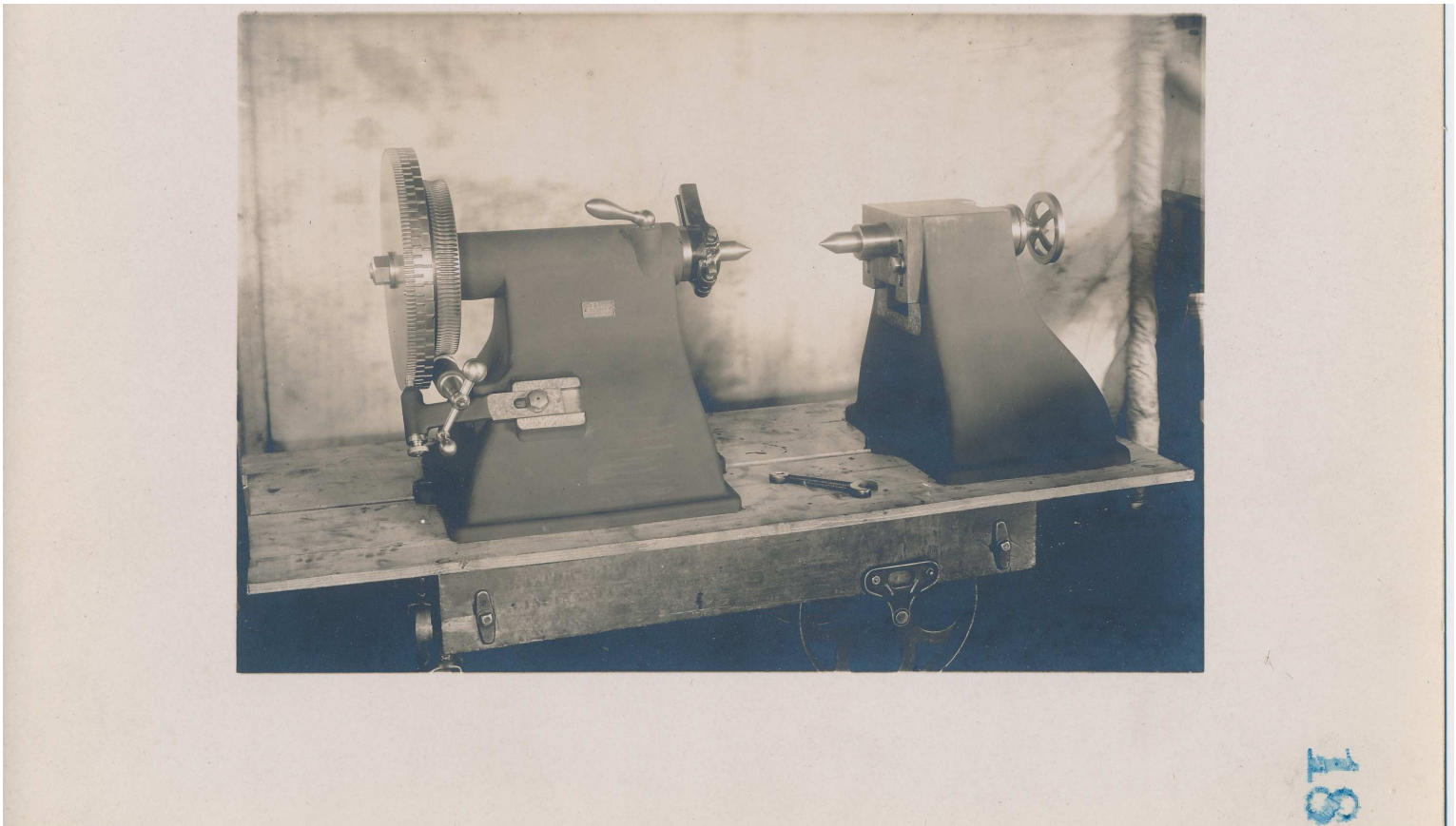


13



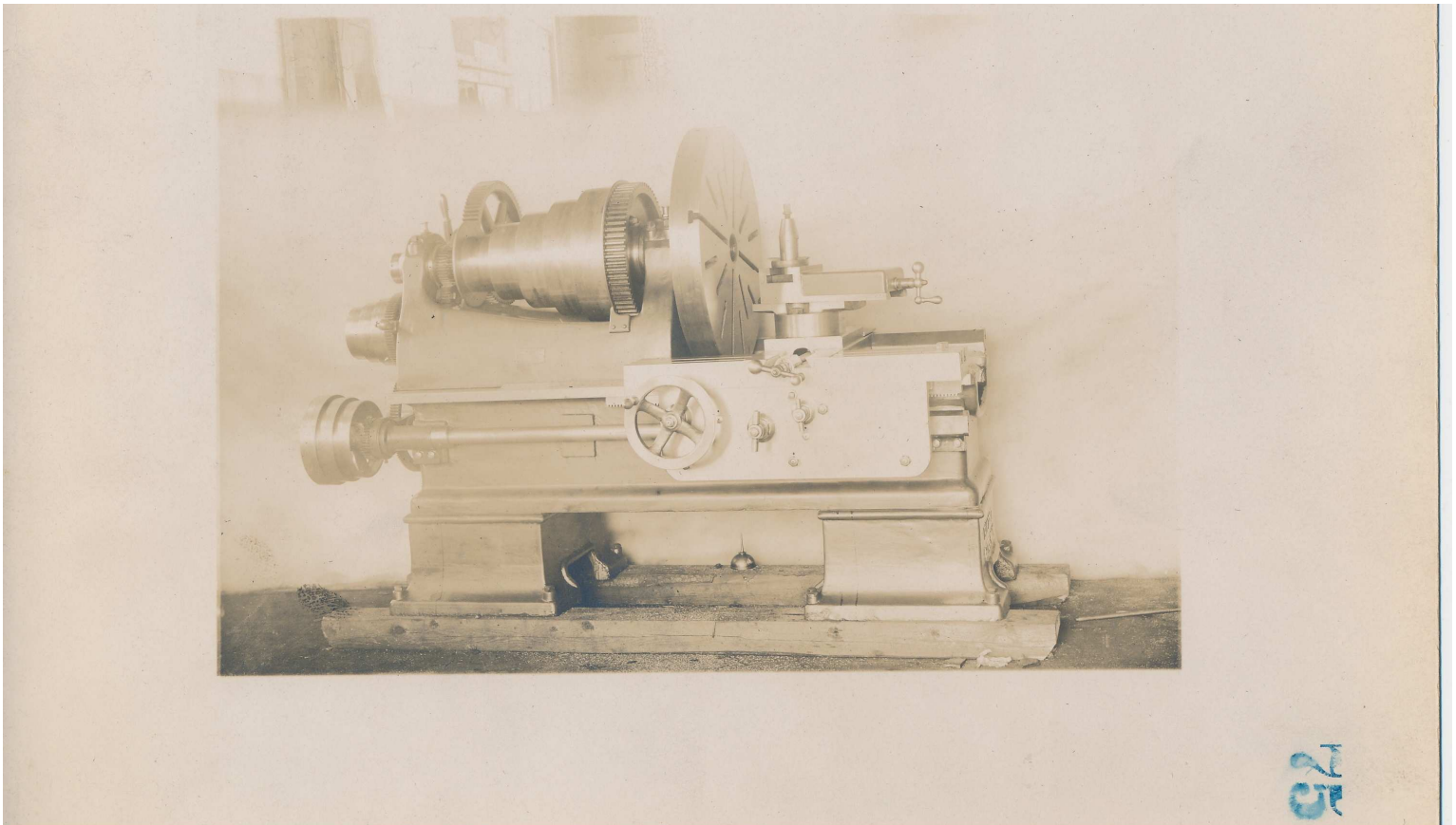
Fay & Scott, Dexter ME (Slide # 8, Image # 13134, Collection [Products - machine tools], tstamp [Wed Sep 12 13:28:14 EDT 2012])
No annotations

Original owned by Dexter Historical Society, Dexter Maine
Reproduced 6/2012 with permission
Duplication or use for commercial purposes prohibited



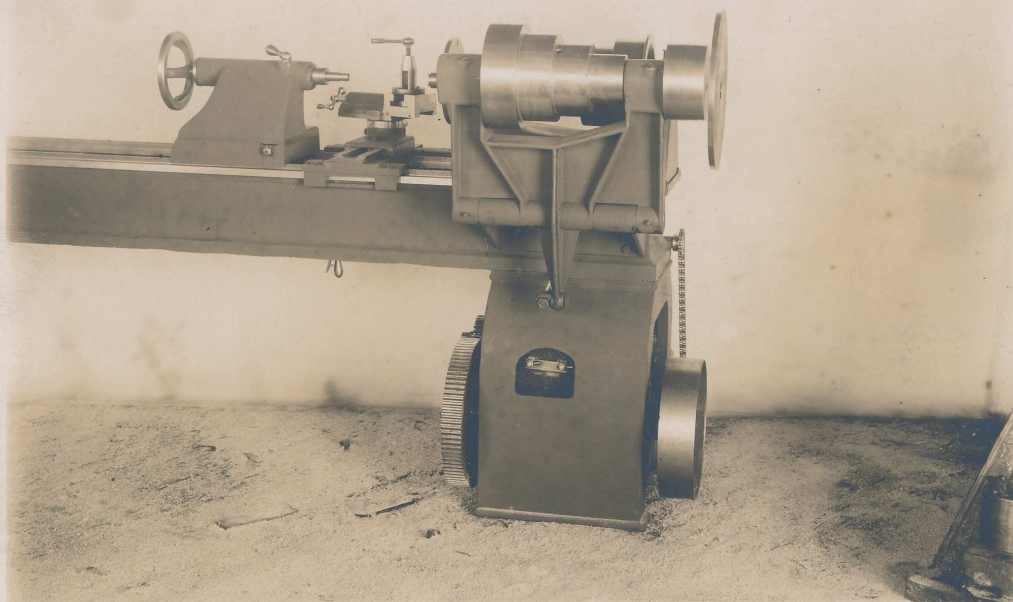
Fay & Scott, Dexter ME (Slide # 9, Image # 13135, Collection [Products - machine tools], tstamp [Wed Sep 12 13:28:14 EDT 2012])
No annotations

Original owned by Dexter Historical Society, Dexter Maine
Reproduced 6/2012 with permission
Duplication or use for commercial purposes prohibited

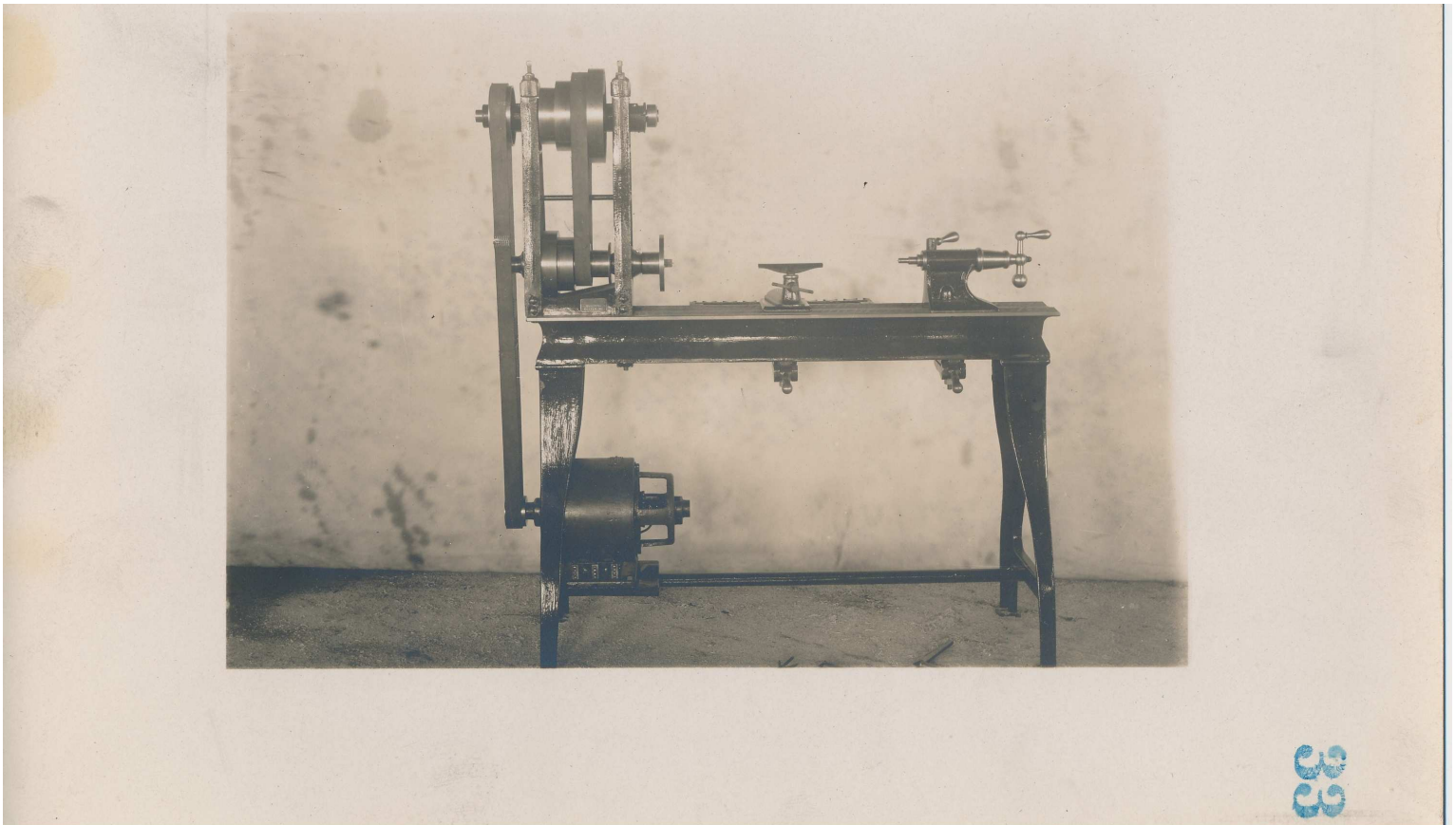


Fay & Scott, Dexter ME (Slide # 10, Image # 13136, Collection [Products - machine tools], tstamp [Wed Sep 12 13:28:14 EDT 2012])
No annotations

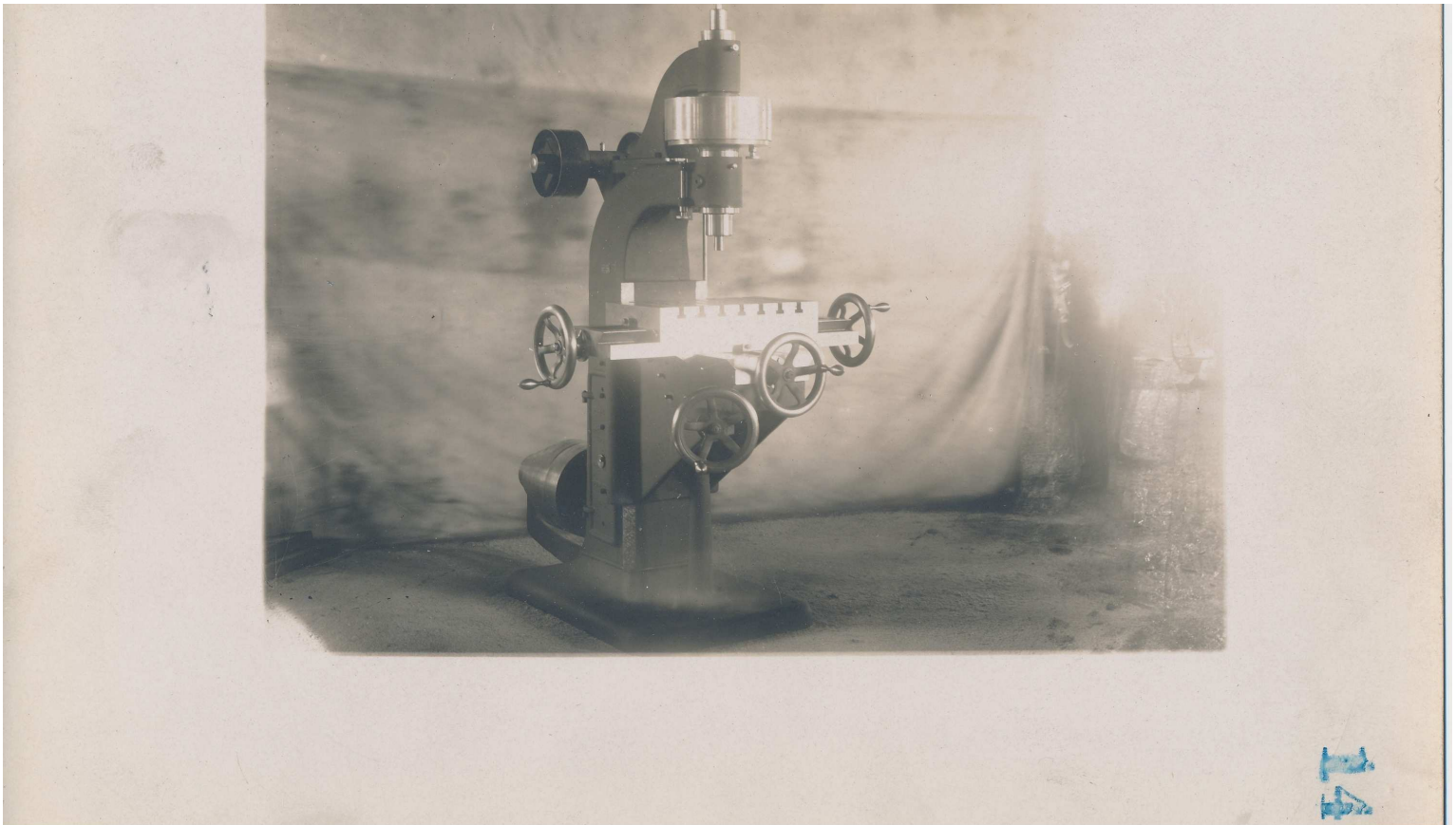
Original owned by Dexter Historical Society, Dexter Maine
Reproduced 6/2012 with permission
Duplication or use for commercial purposes prohibited



Fay & Scott, Dexter ME (Slide # 11, Image # 13137, Collection [Products - machine tools], tstamp [Wed Sep 12 13:28:14 EDT 2012])
No annotations

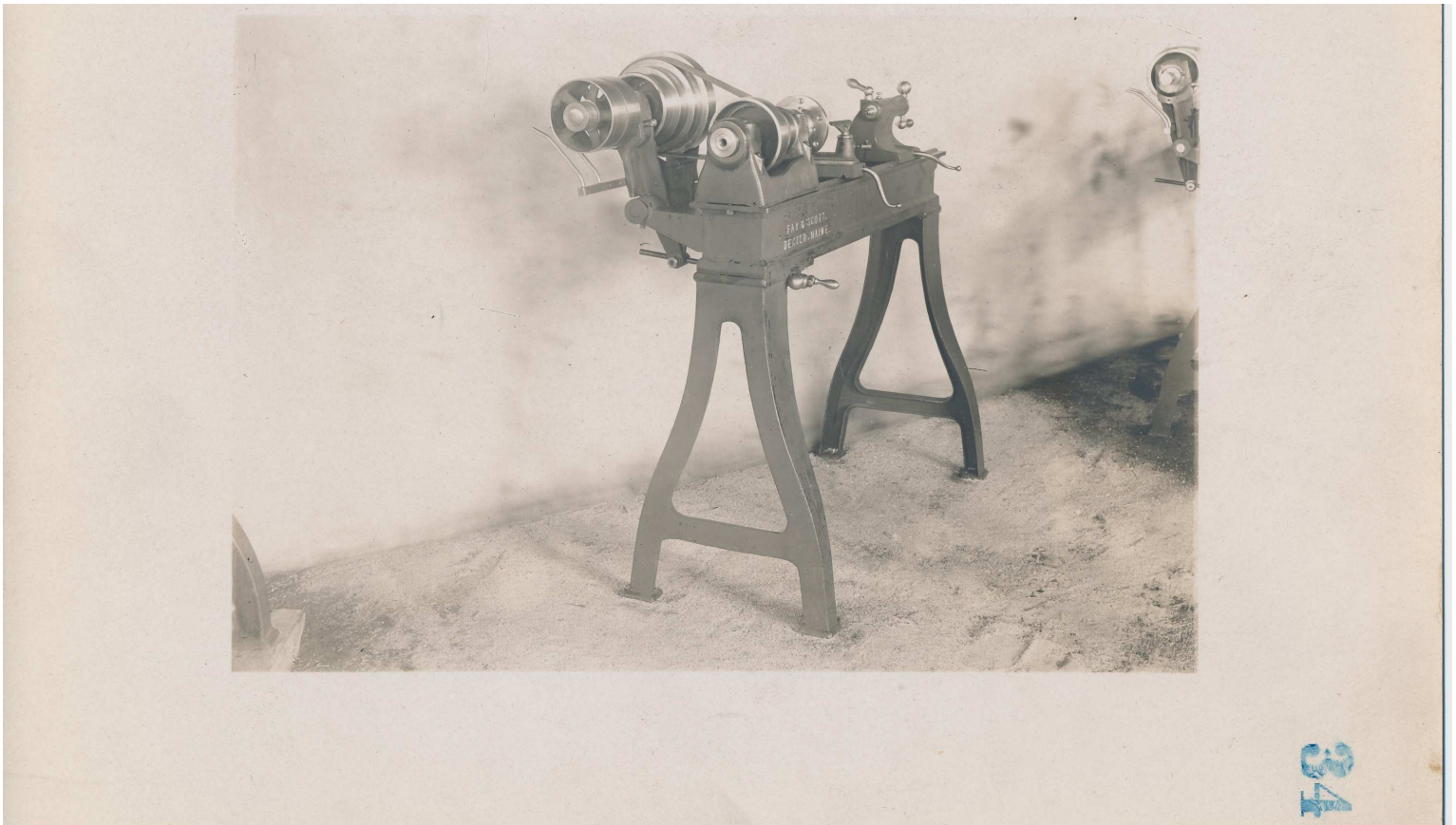


Fay & Scott, Dexter ME (Slide # 12, Image # 13138, Collection [Products - machine tools], tstamp [Wed Sep 12 13:28:14 EDT 2012])
No annotations



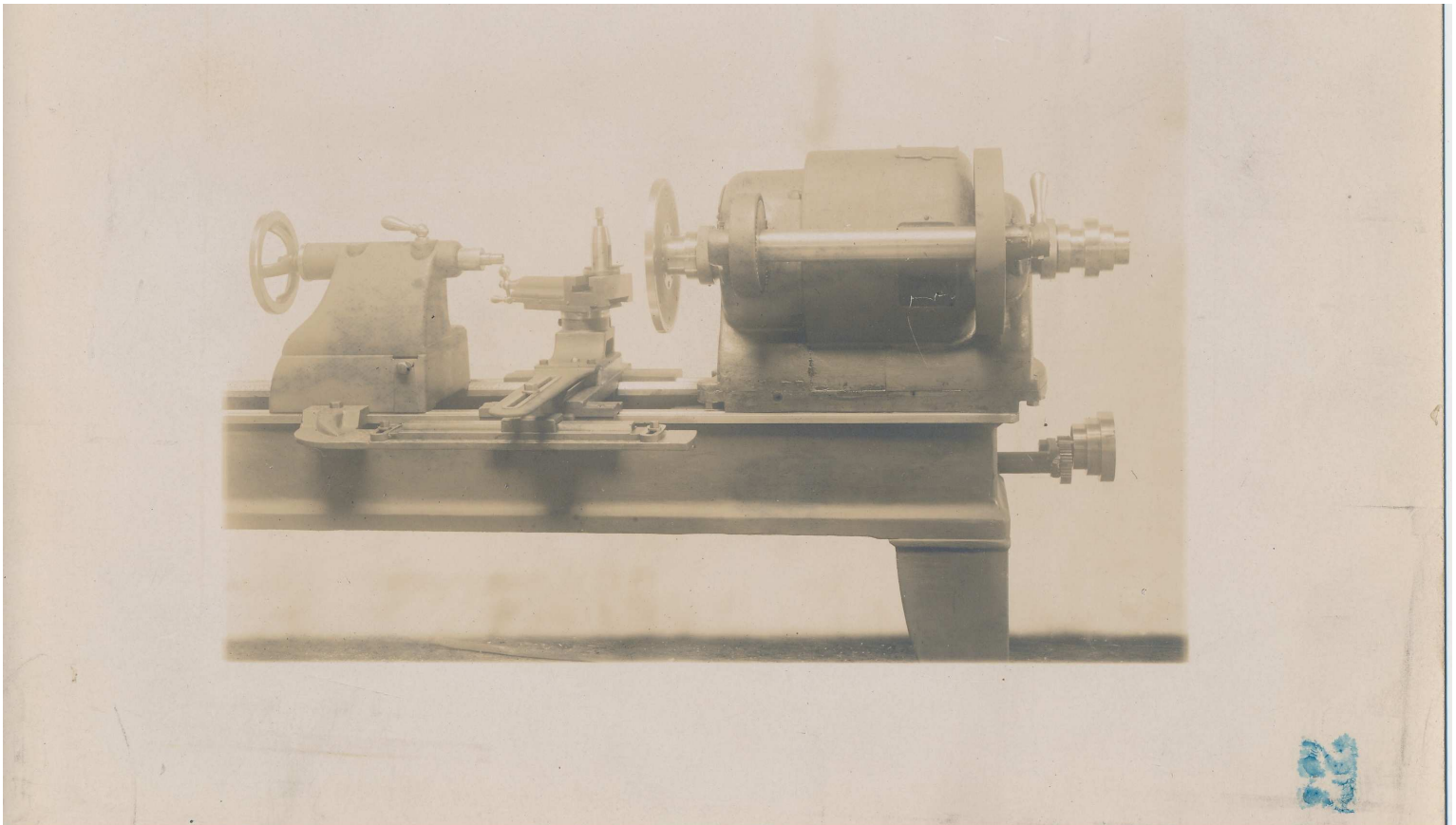
Fay & Scott, Dexter ME (Slide # 13, Image # 13139, Collection [Products - machine tools], tstamp [Wed Sep 12 13:28:14 EDT 2012])
No annotations

Original owned by Dexter Historical Society, Dexter Maine
Reproduced 6/2012 with permission
Duplication or use for commercial purposes prohibited



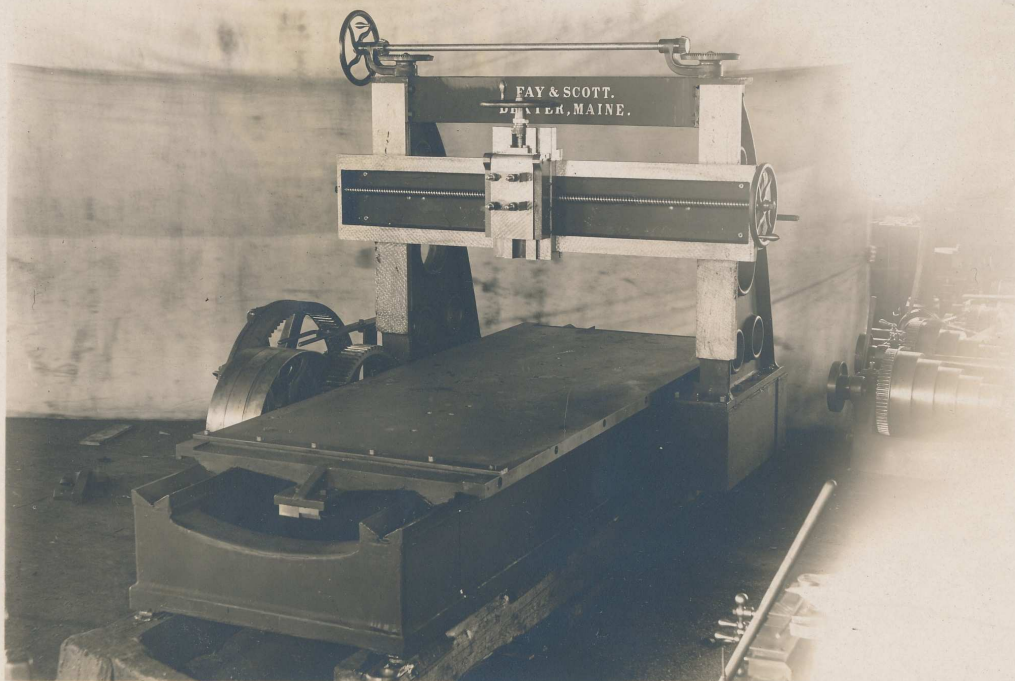
Fay & Scott, Dexter ME (Slide # 14, Image # 13147, Collection [Products - machine tools], tstamp [Wed Sep 12 13:28:14 EDT 2012])
No annotations

Original owned by Dexter Historical Society, Dexter Maine
Reproduced 6/2012 with permission
Duplication or use for commercial purposes prohibited

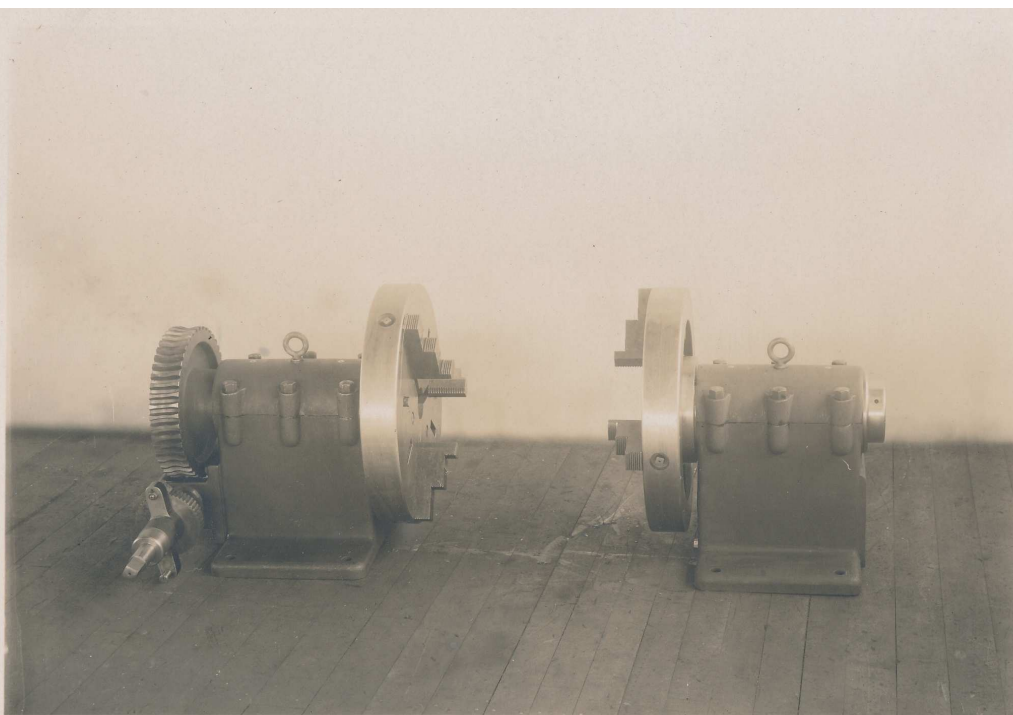


Fay & Scott, Dexter ME (Slide # 15, Image # 13148, Collection [Products - machine tools], tstamp [Wed Sep 12 13:28:14 EDT 2012])
No annotations

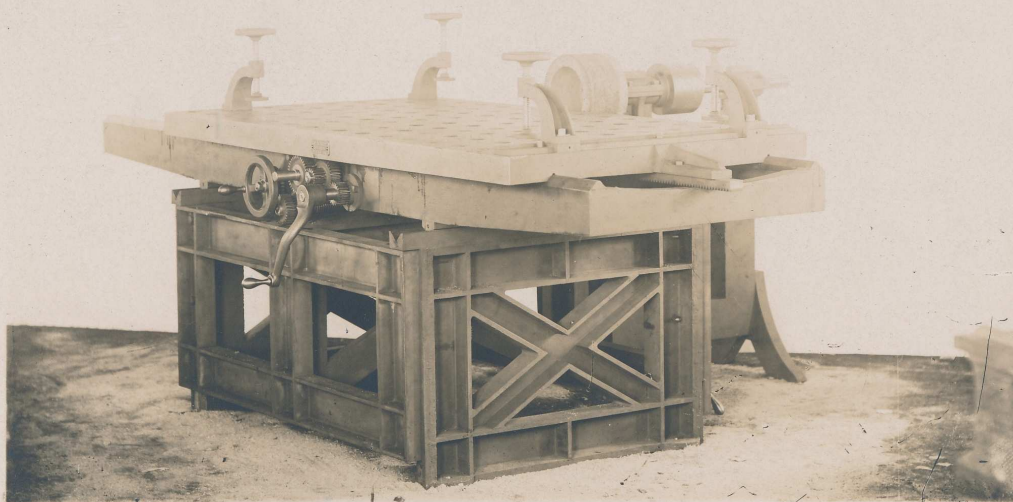
Original owned by Dexter Historical Society, Dexter Maine
Reproduced 6/2012 with permission
Duplication or use for commercial purposes prohibited

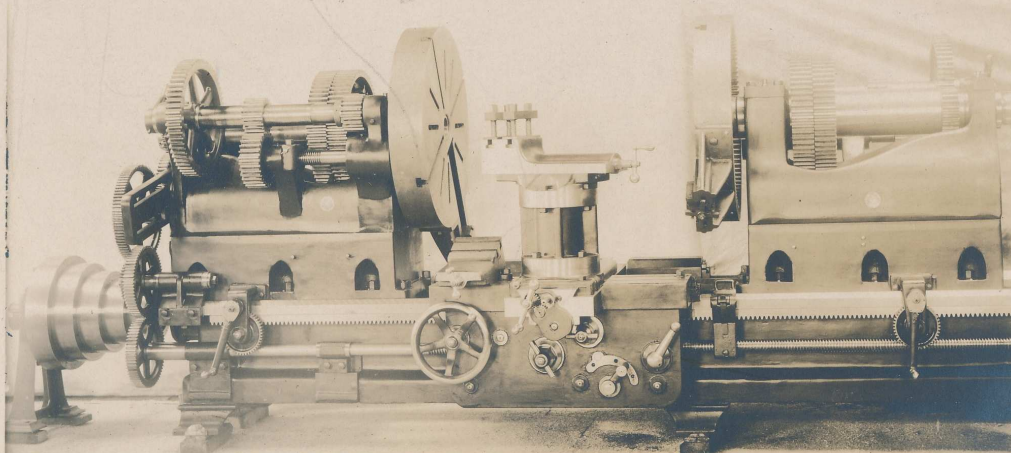


Fay & Scott, Dexter ME (Slide # 16, Image # 13159, Collection [Products - machine tools], tstamp [Wed Sep 12 13:28:14 EDT 2012])
No annotations



Fay & Scott, Dexter ME (Slide # 17, Image # 13164, Collection [Products - machine tools], tstamp [Wed Sep 12 13:28:14 EDT 2012])
No annotations

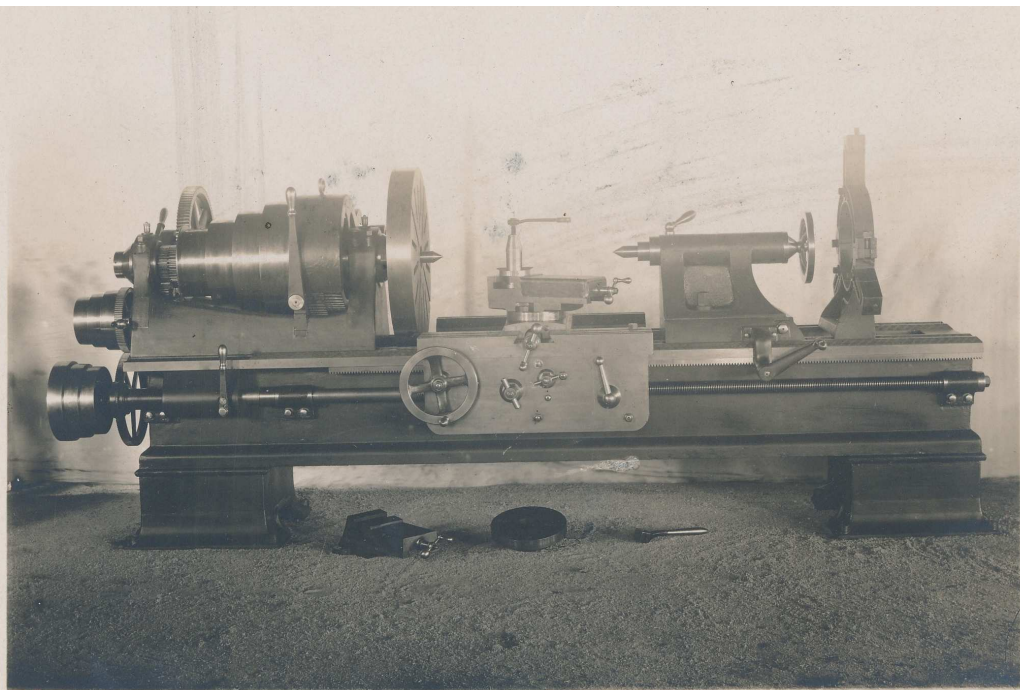




60 X 21 (Raised from 42) Double Head Facing Lathe (AM # 1).

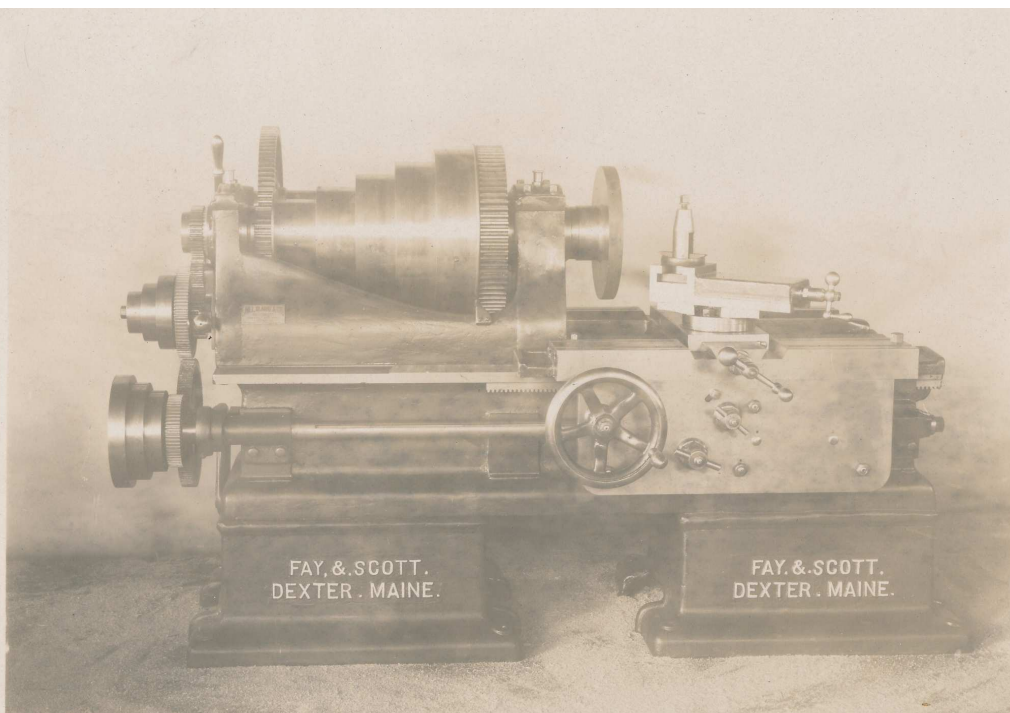
With Carriage, Compd Rest, and Screw Cutting Feature.
Built Jan. 29-09, for (Prentiss) David Gessner, Worcester.

90



28 X 10 Friction Head Engine Lathe. (CC 231)
Built Mar. 3-03.

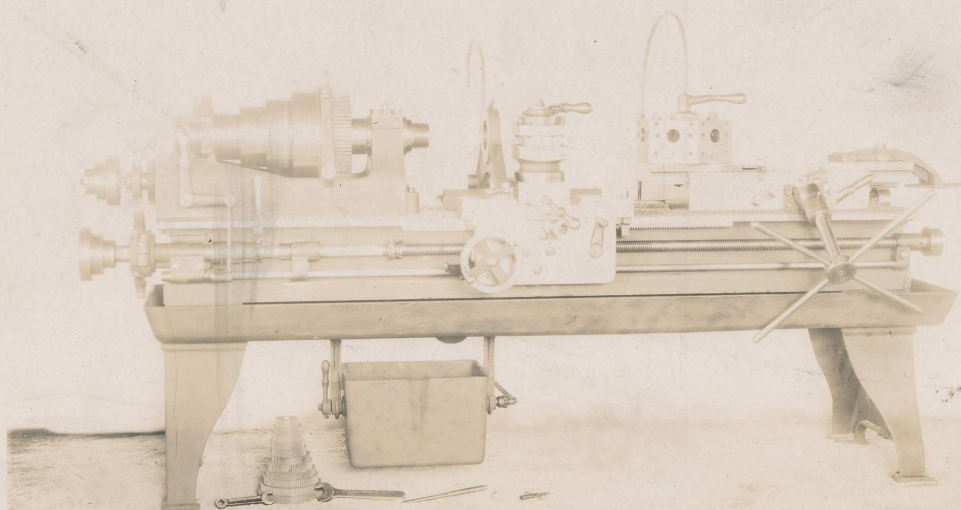
3



24 X 5½ Facing Lathe. (J 8)

Standard Lathe except that it is not screw cutting
and Tail Stock and Center Rest are omitted.
Built Nov.29-05, for (H.C. & Co.) Walworth Mfg. Co. Boston.

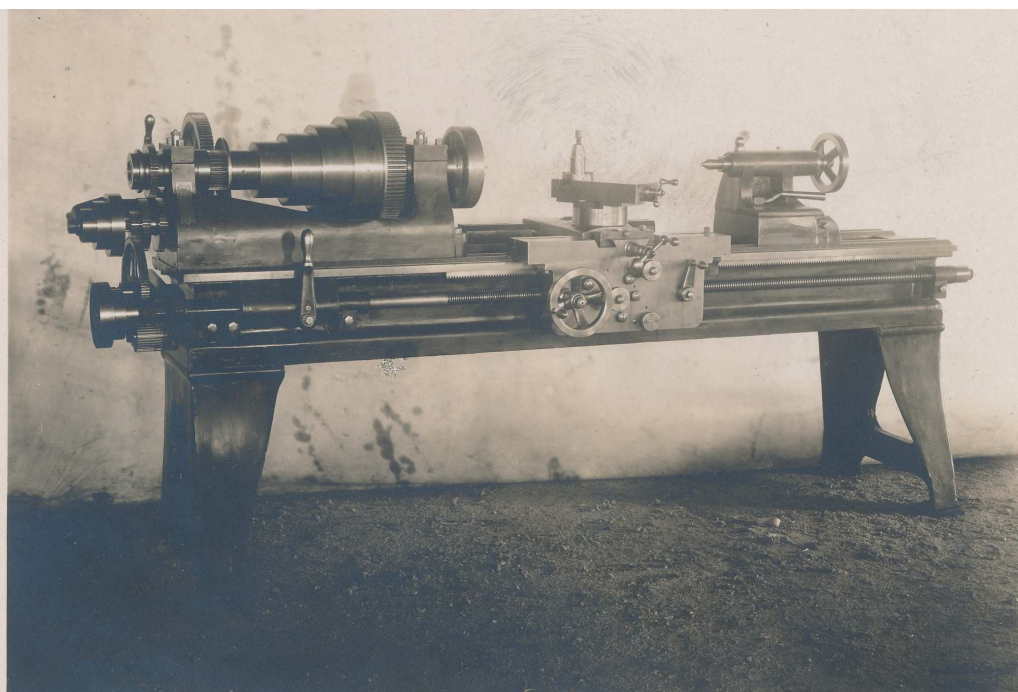




20 X 8 Universal Turret Lathe. (U 3I)

With Turret Pilot Shaft on an angle.
Swing Chucking Rest on Carriage.
Built July 3I-00, for (Prentiss) Wm. Gardam & Son, New York.



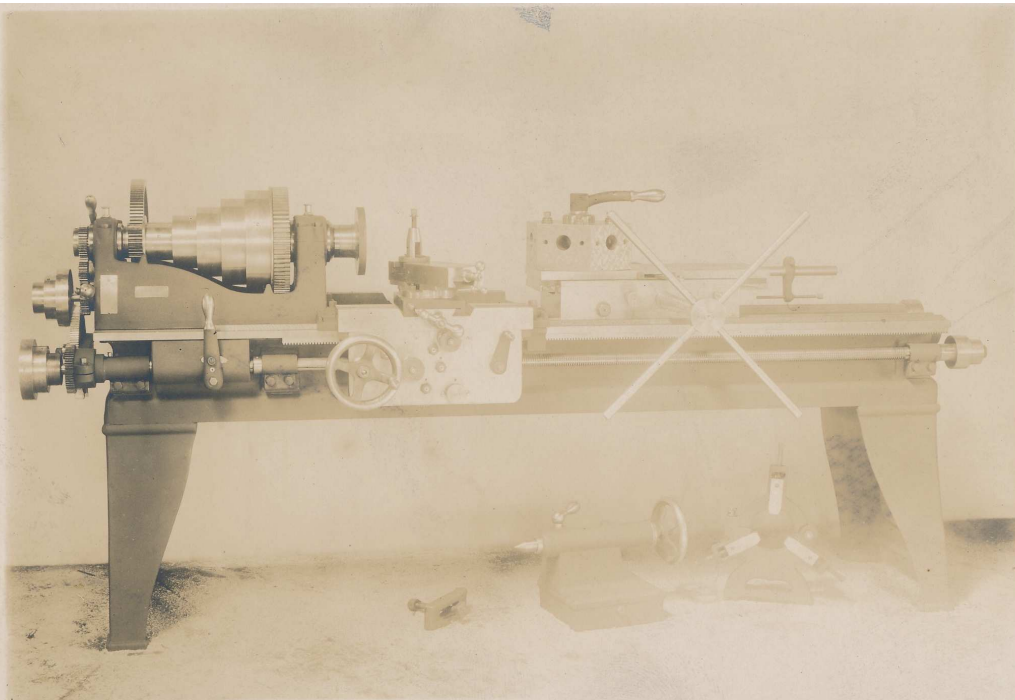


20 X 8 Raised Engine Lathe. (B 3)

Using 18" Bed Parts, and 20" Universal Lathe Head Stock
with reverse gearing omitted.
Built Mar. 24-05, for Equipment.

23

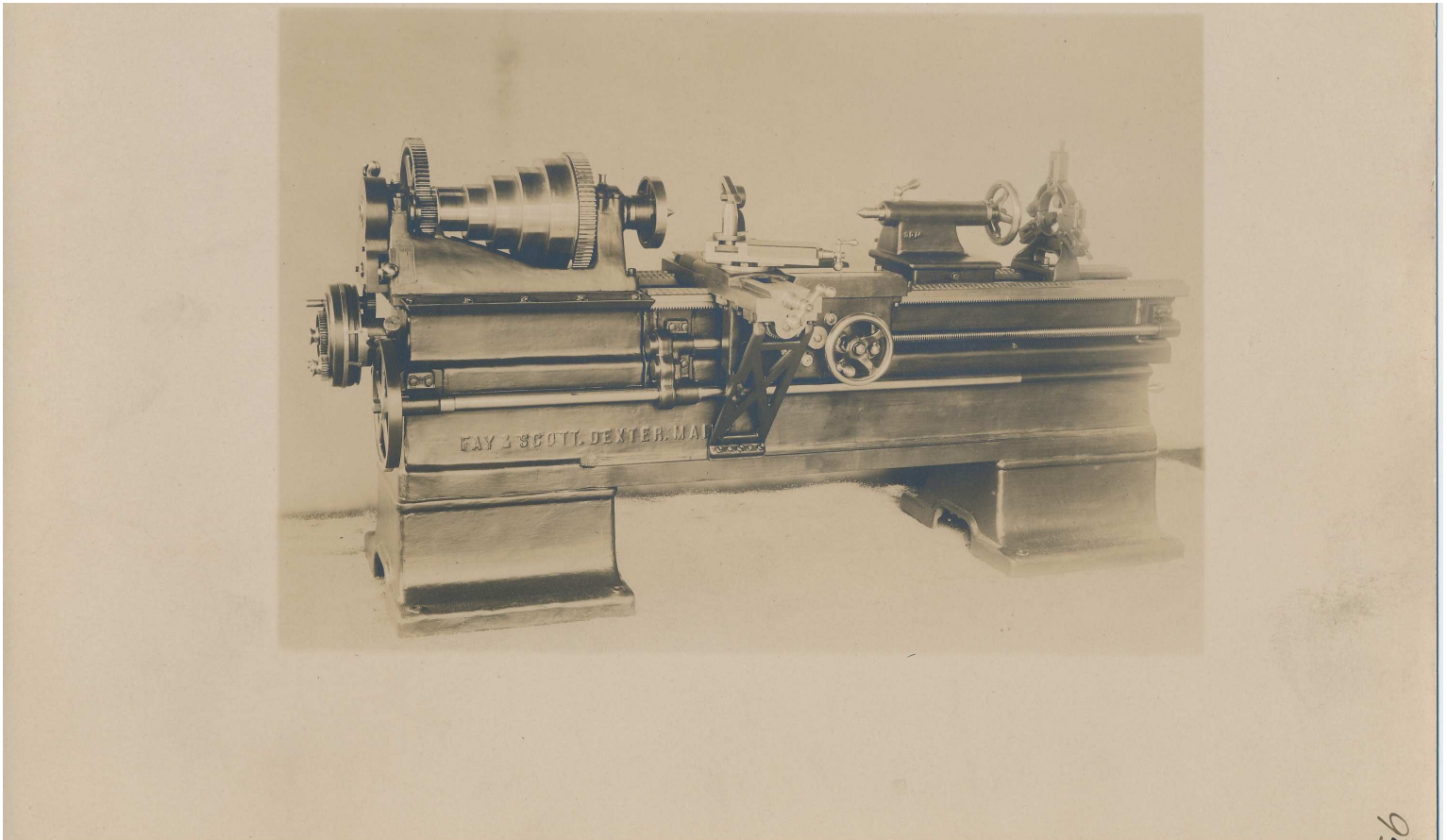
Negative loaned to Printer 3-17-10



18 X 8 Standard Engine Lathe. (DD 300)

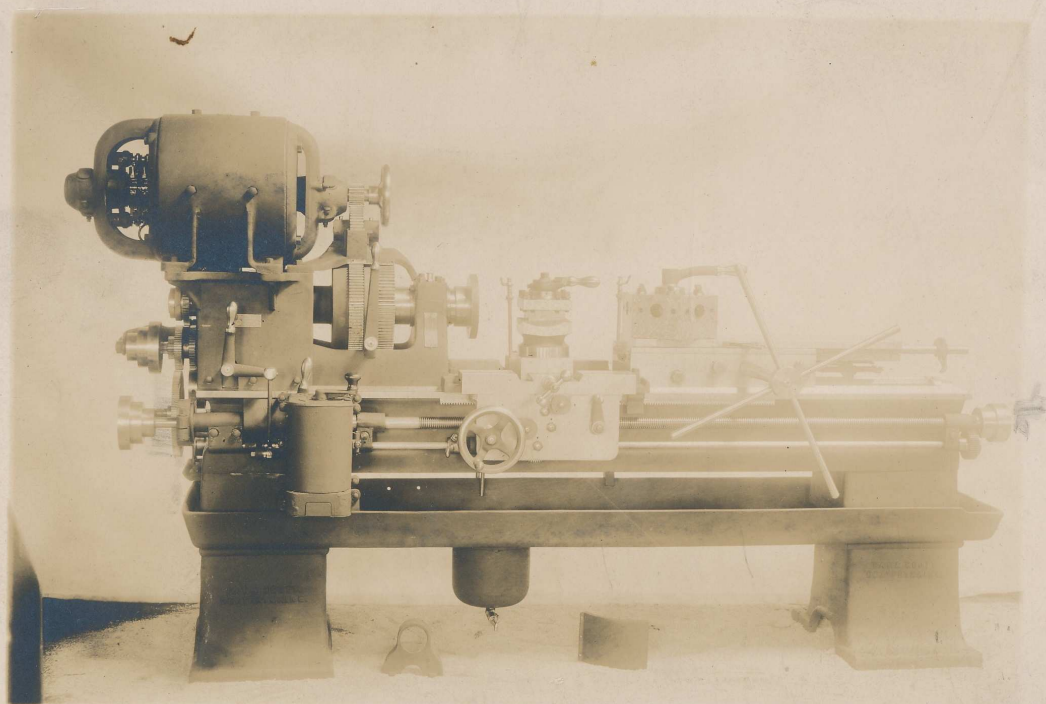
With Taper Attachment, and Automatic Revolving Power Feed
Bed Turret.
Lathe Built July 21-07, for (A.D. White) Chicago.





Fay & Scott, Dexter ME (Slide # 25, Image # 13178, Collection [Products - machine tools], tstamp [Wed Sep 12 13:28:14 EDT 2012])
No annotations

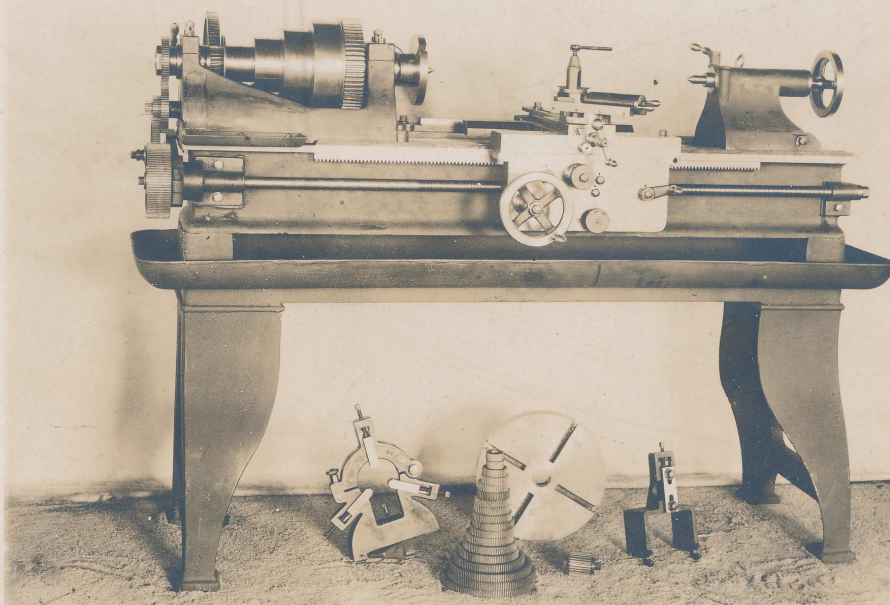
Original owned by Dexter Historical Society, Dexter Maine
Reproduced 6/2012 with permission
Duplication or use for commercial purposes prohibited



20 X 8 Universal Turret Lathe. (U 143)

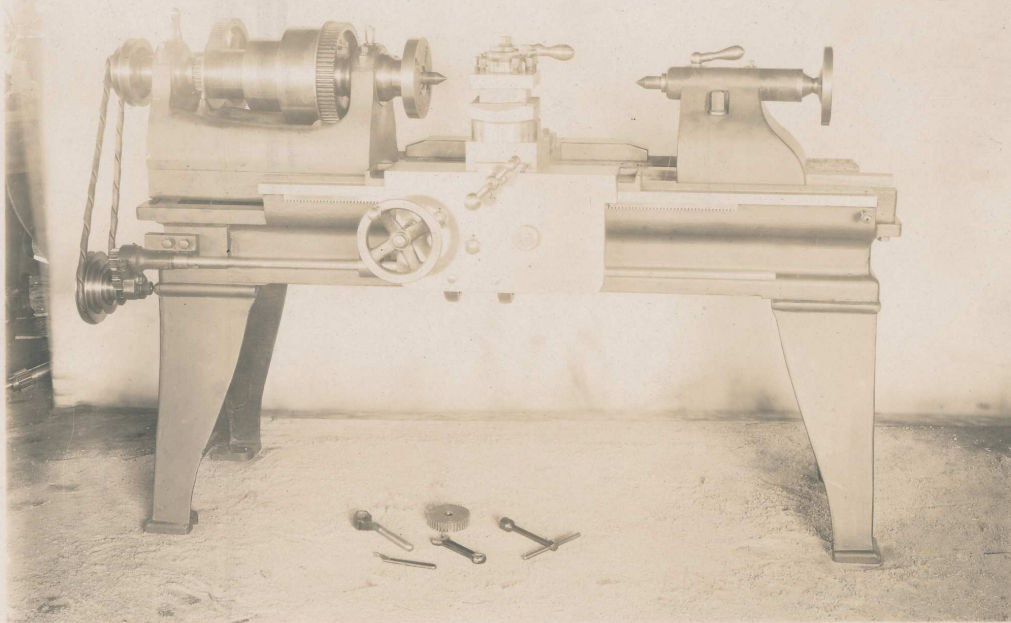
Motor Driven by Direct Gearing. General Electric Co. Motor 5 H.P.
Lathe built Sept. 11-07, for Twin City Rapid Transit Co., Chicago.

43



13 X 5 Standard Engine Lathe (H 35)
With Oil Pan, and Taper Attachment.
Built Dec. 26-1899, for Shop Equipment.



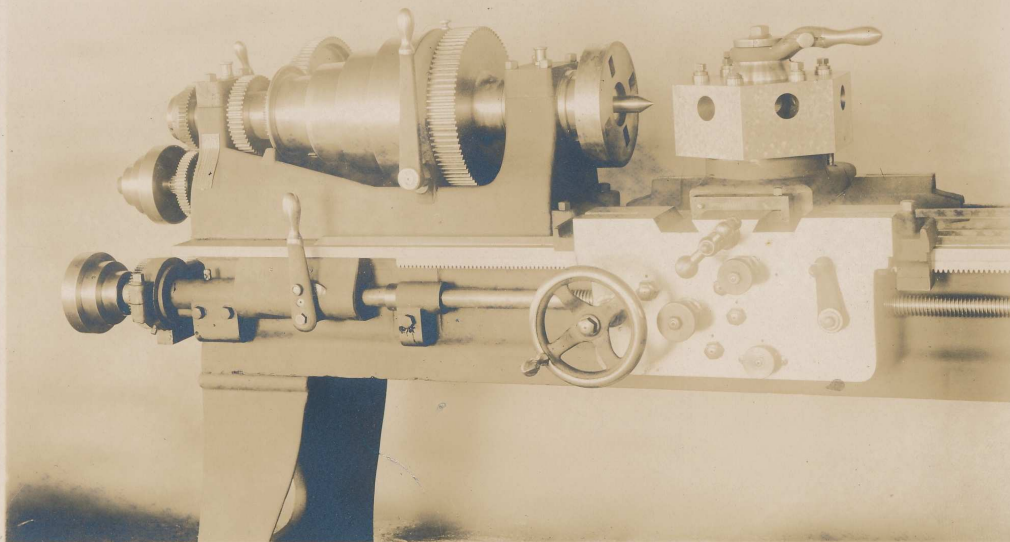


18 X 6 Taper Turning Lathe. (DC I)

Takes work up to 30" in length, and turns tapers up to 1" to the foot.

Built Sept. 13-04, for (Prentiss) Kelly & Jones Co., Greensburg, Pa.

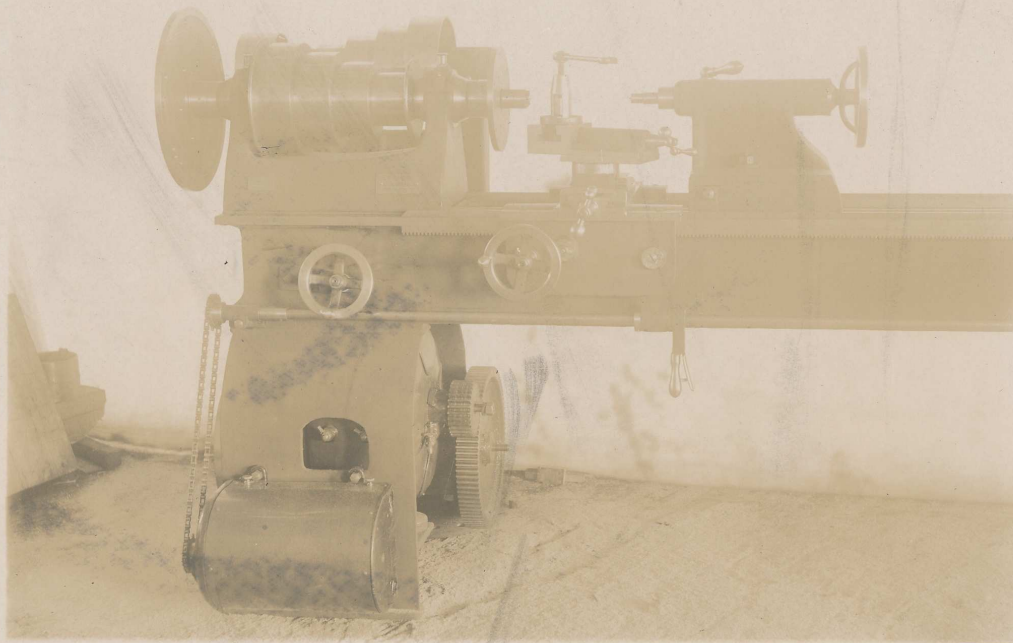
40



18 X 8 Engine Lathe. (DD 291) Near view.

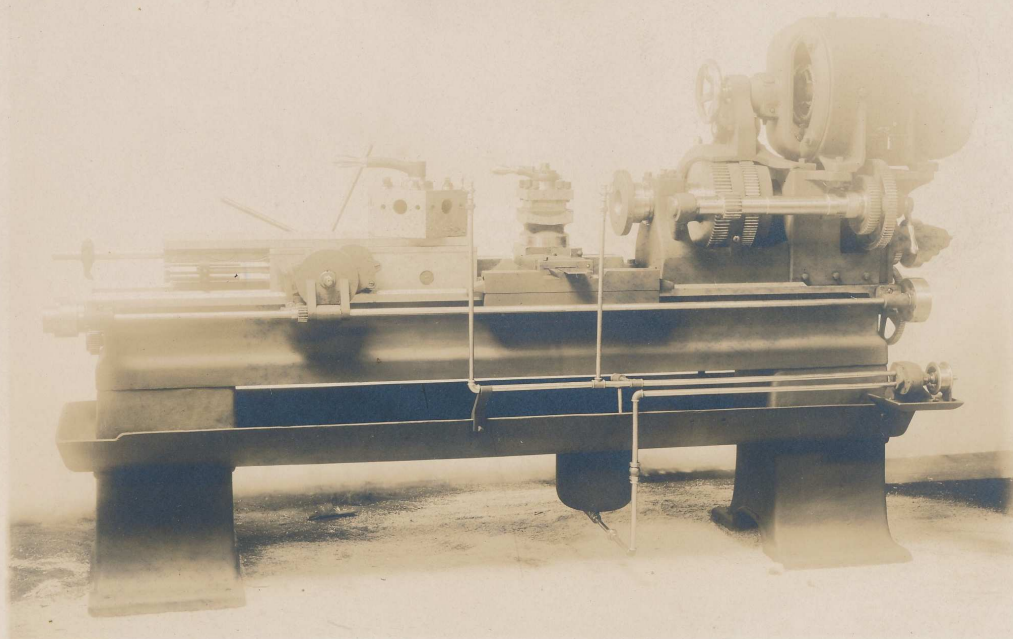
Using 20" Universal Lathe Head Stock cut down, and reverse
gearing omitted. With Carriage widened at the waist, and
Heavy Hexagon Carriage Turret.
Built Apr. 15-07, for (A.D. White) Truscott Boat Mfg. Co. St. Joseph, Mich.

44



20 X 10 Motor-Driven Pattern Makers' Lathe. (G 294)
Gaerred Motor-950 Rev.-110 Volt D.C.

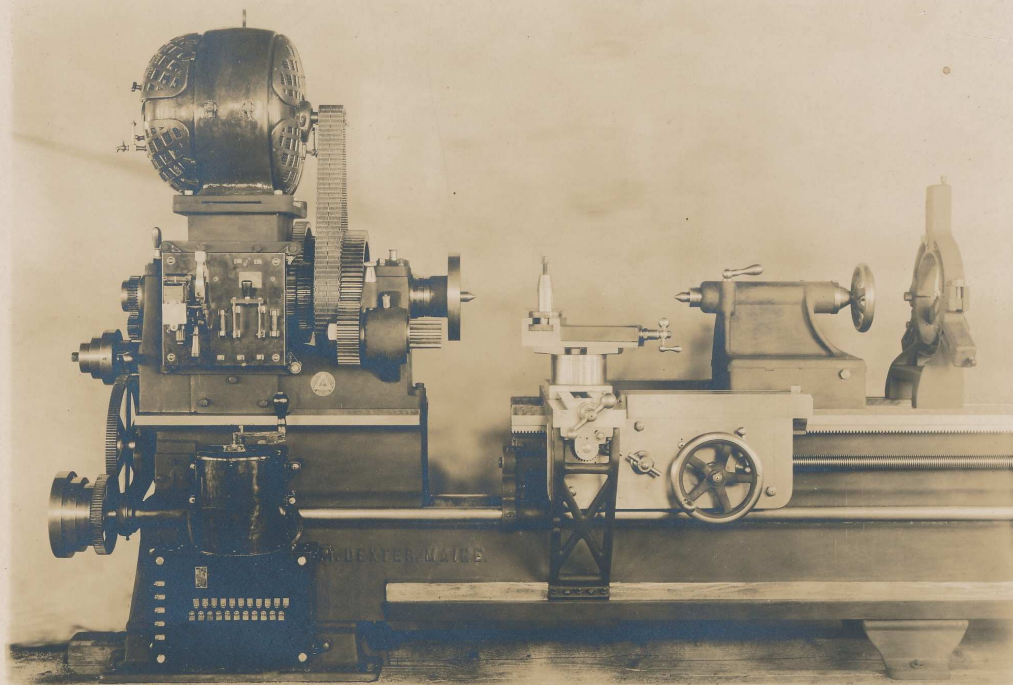
294



20 X 8 Universal Turret Lathe. (rear view) U 143

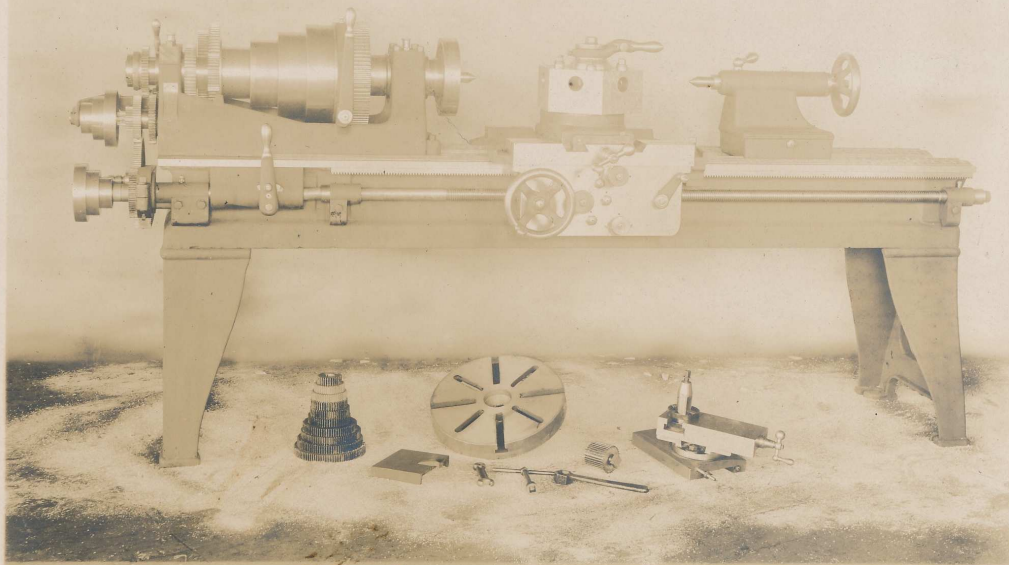
Motor Driven by Direct Gearing. General Electric Co. Motor 5 H.P.
Lathe built Sept. II-07, for Twin City Rapid Transit Co., Chicago.

48



24-46 X I7 Extension Gap Engine Lathe. (JK 7)

Motor Driven by Silent Chain. Crocker-Wheeler Motor
Size 7- $\frac{1}{2}$ HP. 125 Volt. 1070 R.P.M.
Lathe built Feb. 27-07, for (Prentiss) Boston Navy Yard.

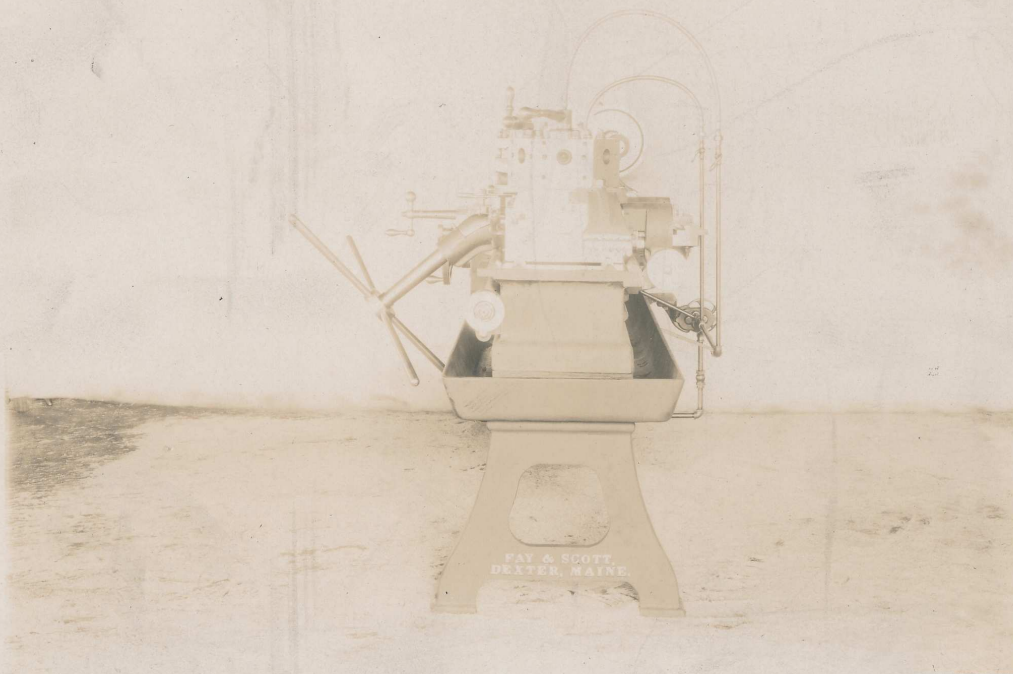


18 X-8 Engine Lathe. (DD 291)

Using 20" Universal Lathe Head Stock cut down, and reverse
gearing omitted. With Carriage widened at the waist, and
Heavy Hexagon Carriage Turret.
Lathe Built Apr. 15-07, for (A.D. White) Truscott Boat Mfg. Co.
St. Joseph, Mich.



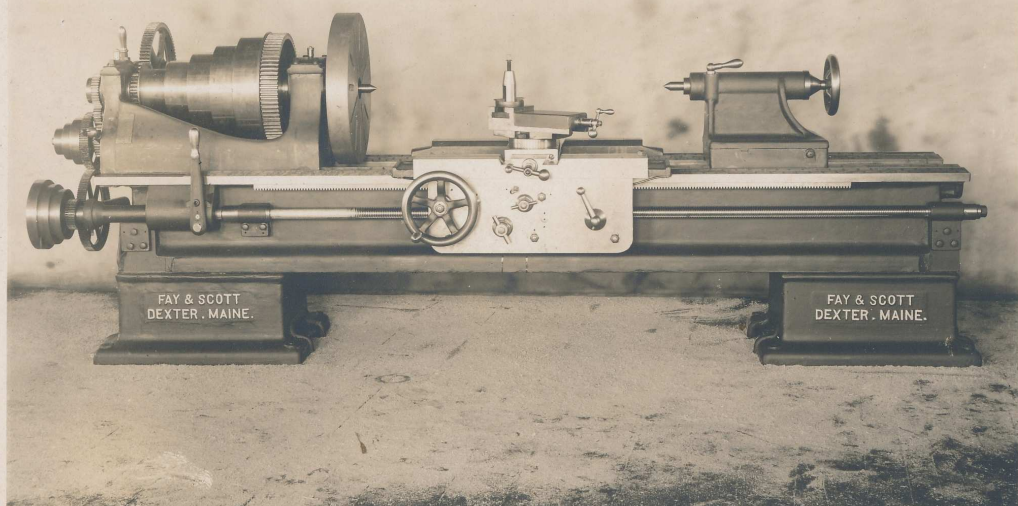
405.41-101



20 X 8 Universal Turret Lathe. (U 3I) Rear end view.

With Turret Pilot Shaft on an angle.
Swing Chucking Rest on Carriage.
Built July 3I-00, for (Prentiss) Wm. Gardam & Son, New York.

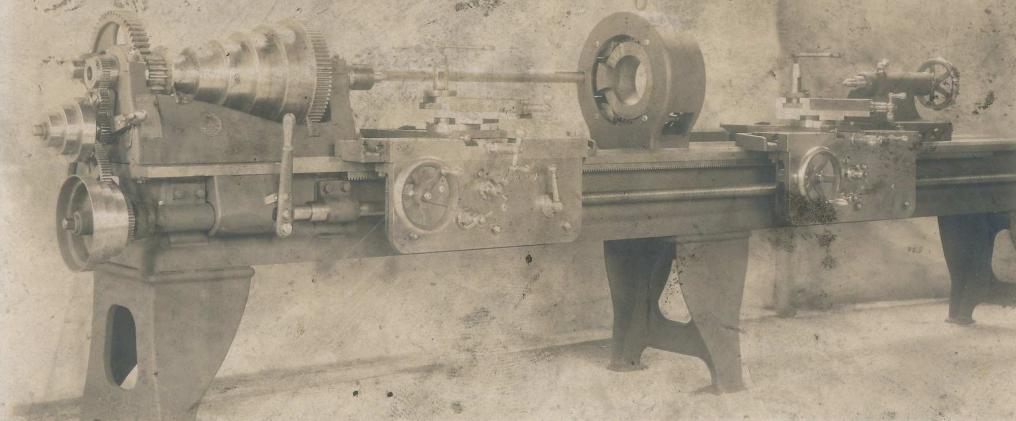
50



24 X 12 Standard Engine Lathe. (J 2)

Built Mar. 13-05, for Prentiss, N.Y.

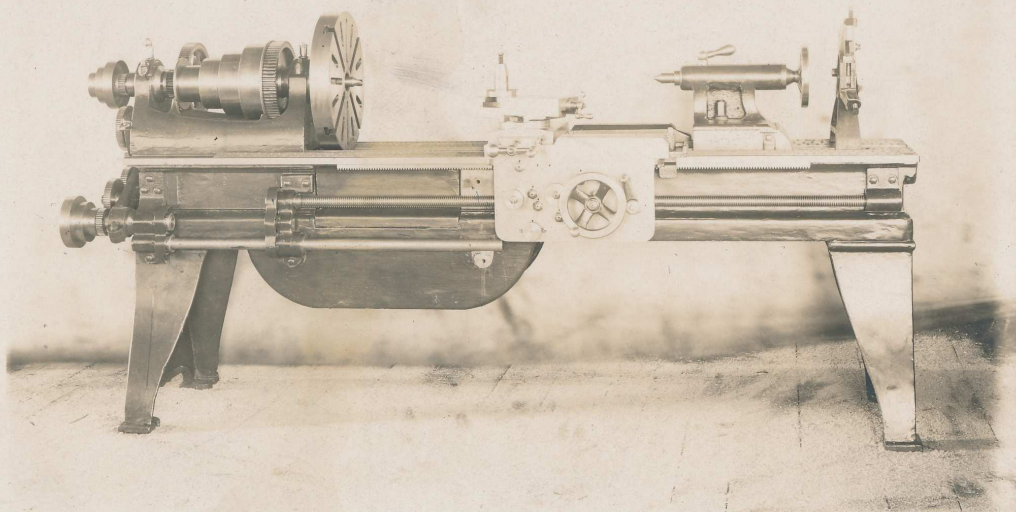
87
87



20 X 14 Axel Turning Lathe. (B 19)

Standard Engine Lathe, with special back gearing, Axel Turning Device, Two Taper Attachments, Two Carriages and Aprons arranged to feed in opposite directions.
Built Aug. 26-08, for (Prentiss) V. E. C., Canoceria, Mexico City.





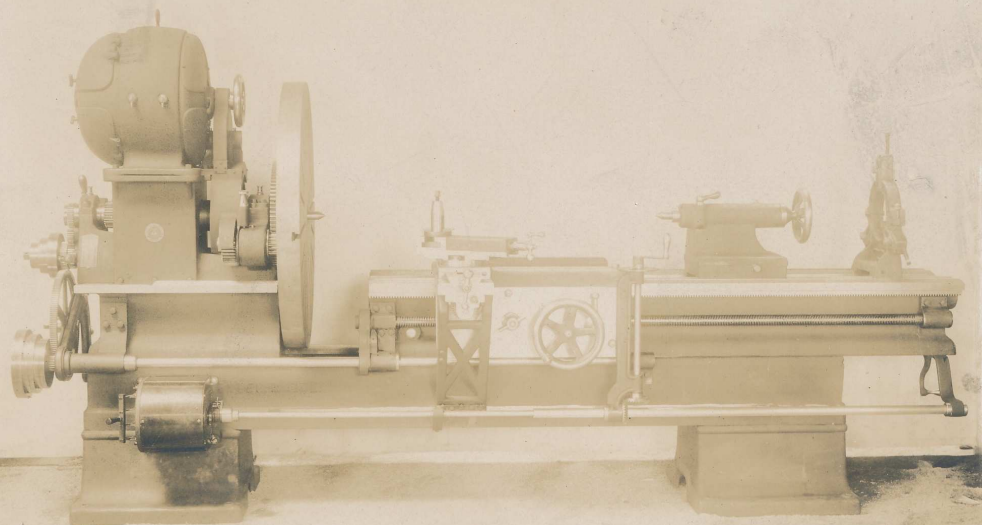
18-36 X 8 Gap Lathe.

(DD 208)

Gap in Bed 18" long.

Built Feb. 4-05, for (Prentiss) Springfield Drop Forge Co.

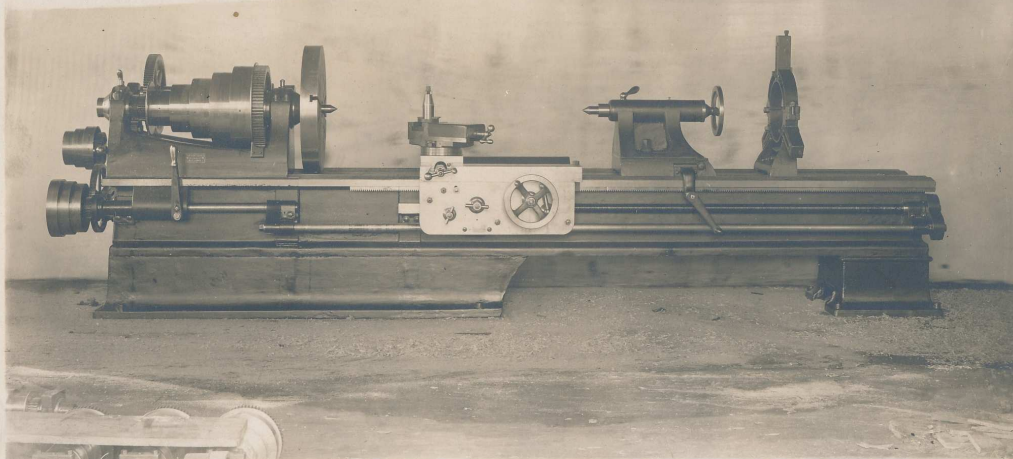
42



20-42 X 10 Extension Gap Engine Lathe. (BK 18)

Motor Driven by direct Gearing. Crocker-Wheeler Motor $7\frac{1}{2}$ H.P.
Variable Speed 500 to 1500 Rev.
Lathe built Aug. 10-07, for Automobile Club of America, New York.

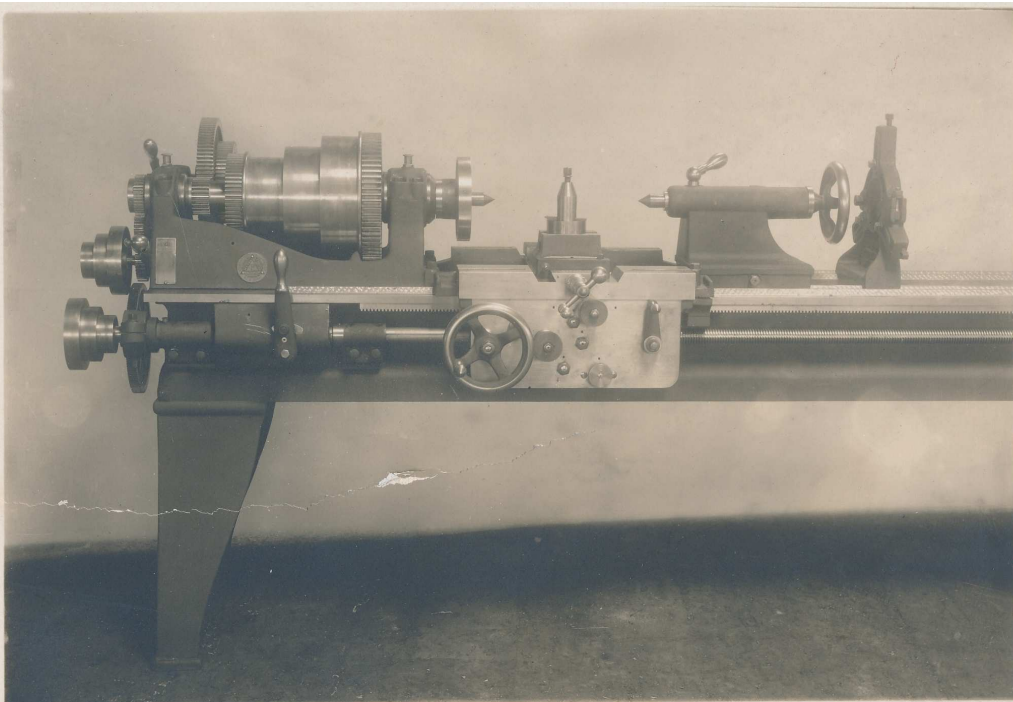




28-48 X 14 Gap Engine Lathe. (CC 265)

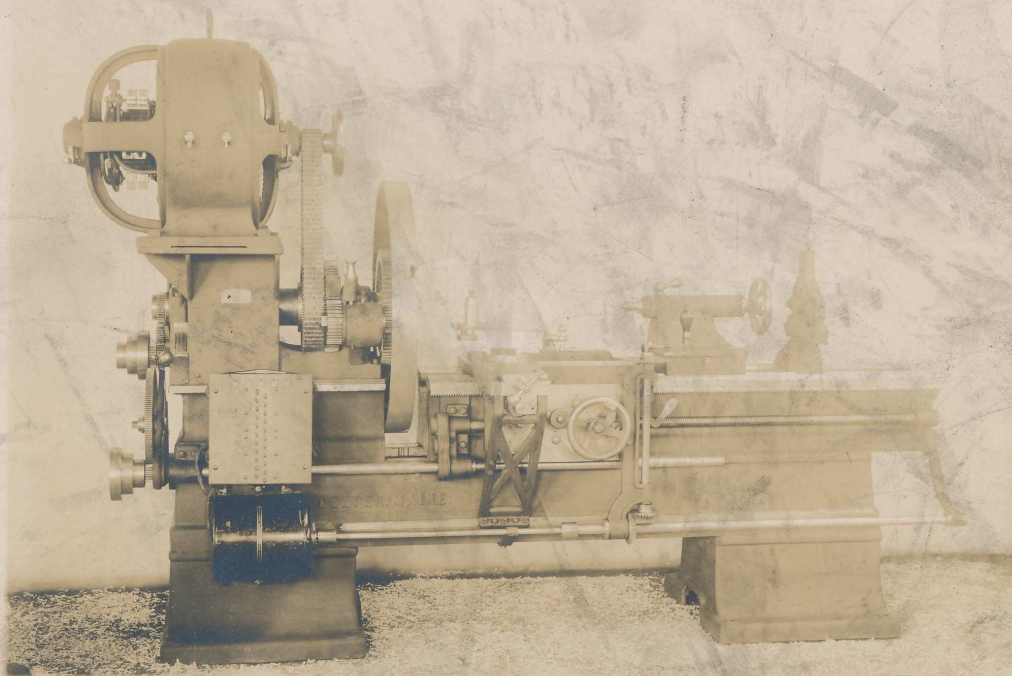
Gap in bed 18" wide.
Built May.9-04, for (Prentiss) shipped to New Zealand.

63



16 X 8 Engine Lathe. (DD 338)

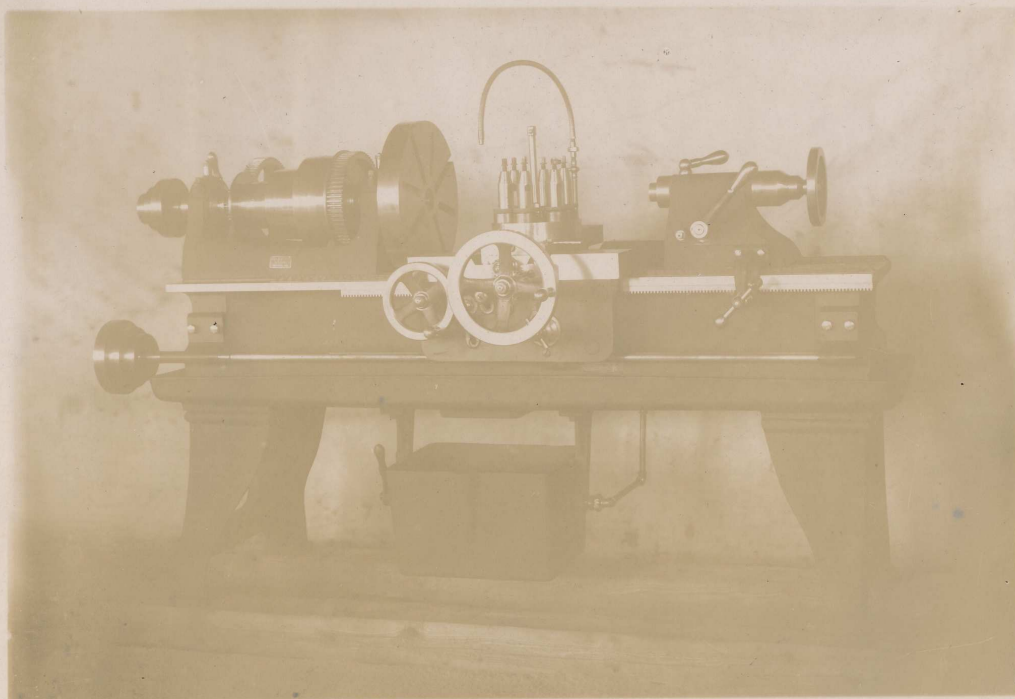
With Double Back Gear and Three Step Cone
Built July 1-07, for (Prentiss) John E. Smith Sons Co. Buffalo, N.Y.



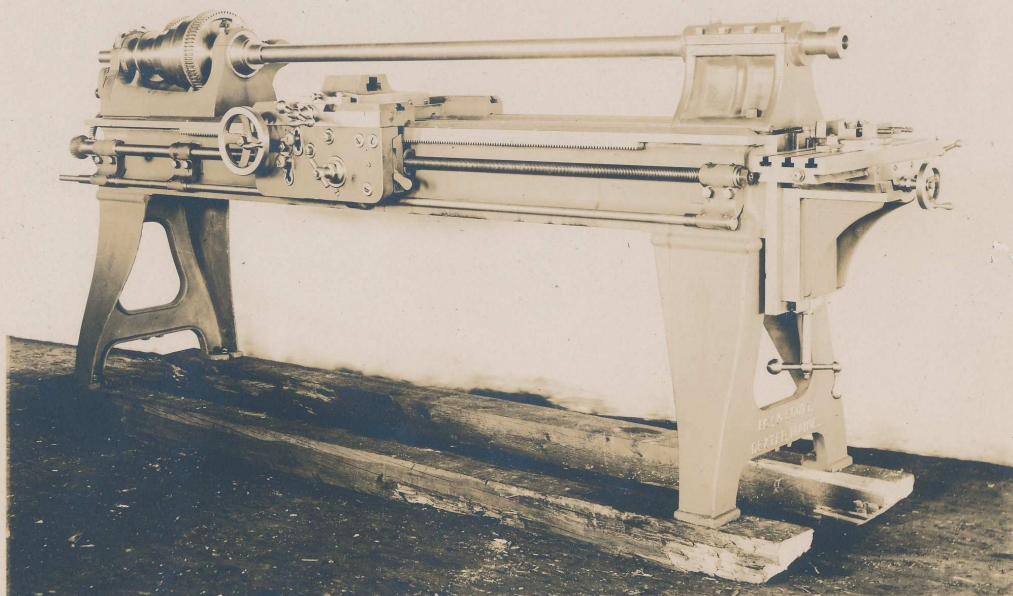
18-36 X 8 Extension Gap Engine Lathe. (DK 61)

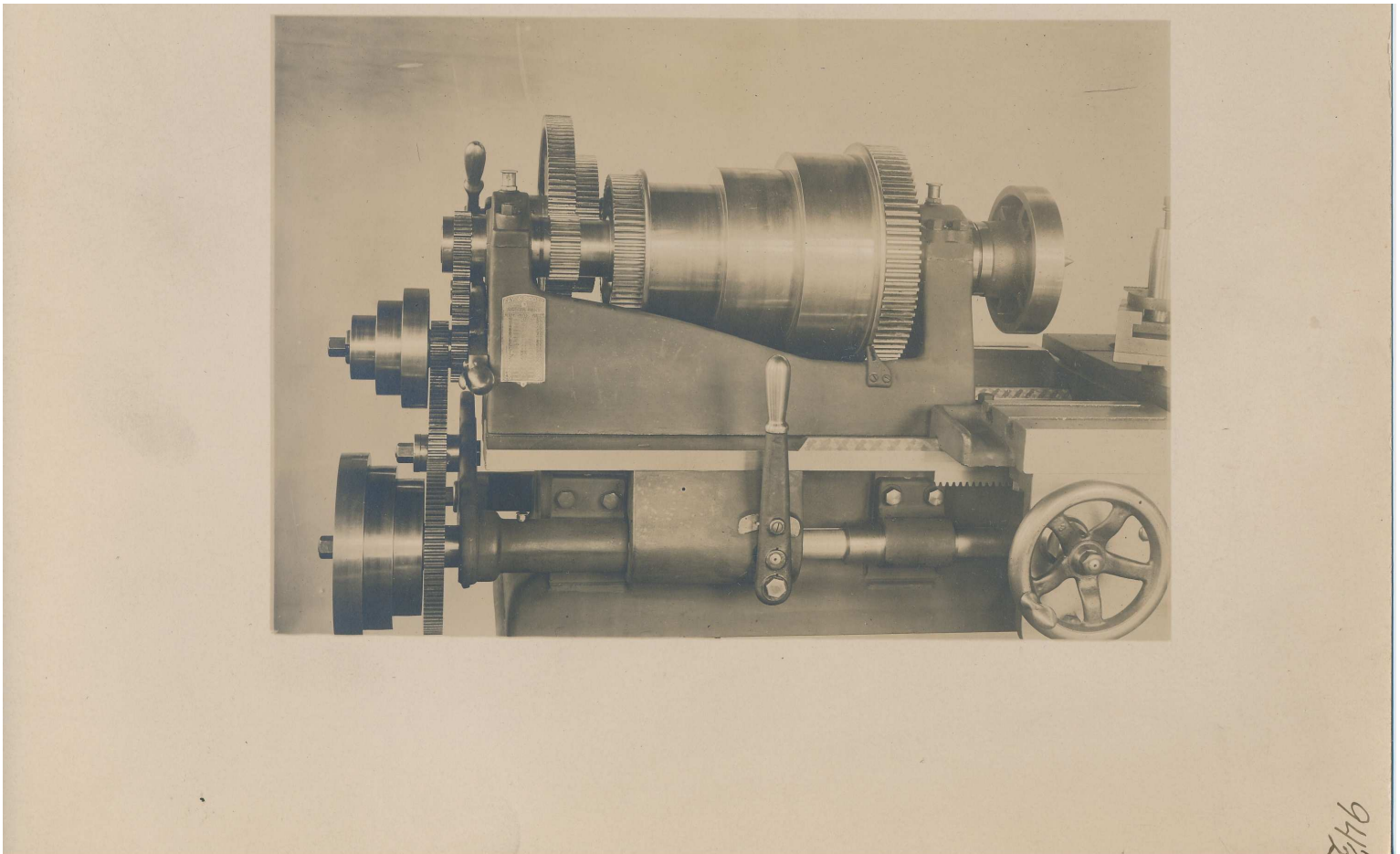
Motor Driven by Silent Chain. Crocker Wheeler Motor 10-IF 4½ H.P.
Lathe built Nov. 30-07, for (Prentiss) Rio de Janeiro.





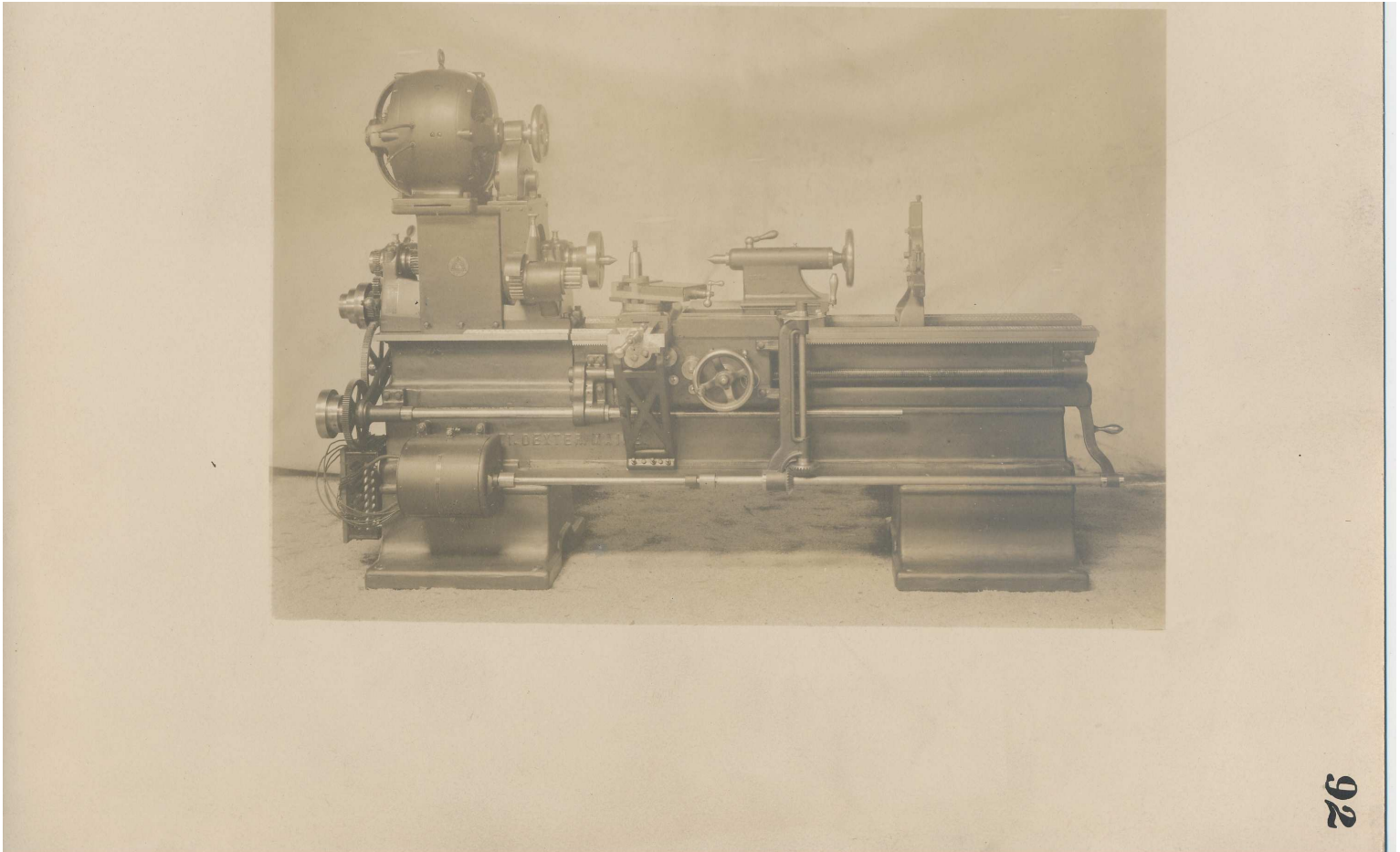
22





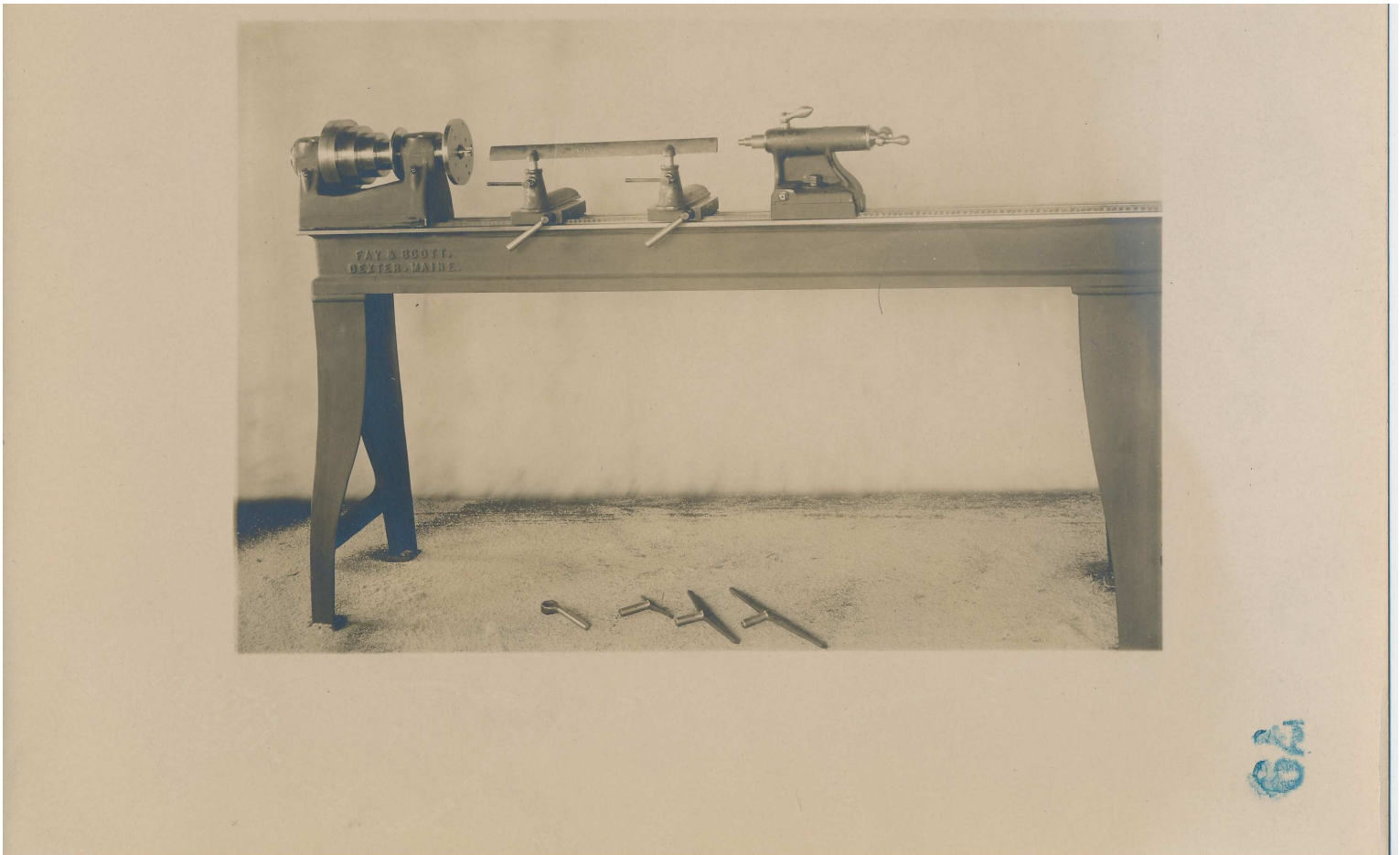
Fay & Scott, Dexter ME (Slide # 44, Image # 13197, Collection [Products - machine tools], tstamp [Wed Sep 12 13:28:14 EDT 2012])
No annotations

Original owned by Dexter Historical Society, Dexter Maine
Reproduced 6/2012 with permission
Duplication or use for commercial purposes prohibited



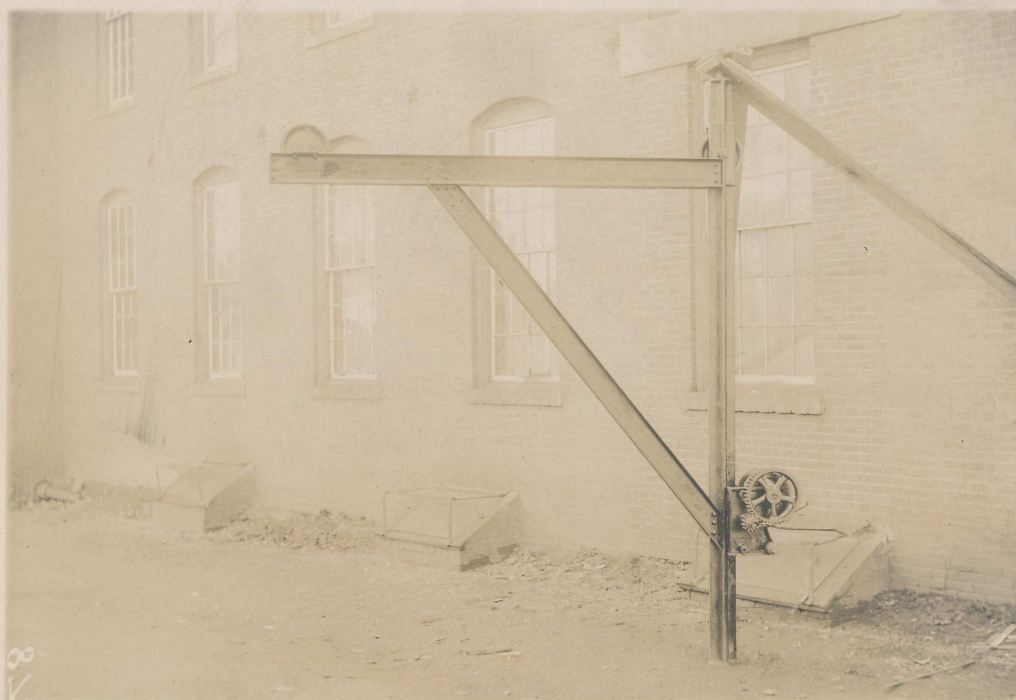
Fay & Scott, Dexter ME (Slide # 45, Image # 13198, Collection [Products - machine tools], tstamp [Wed Sep 12 13:28:14 EDT 2012])
No annotations

Original owned by Dexter Historical Society, Dexter Maine
Reproduced 6/2012 with permission
Duplication or use for commercial purposes prohibited



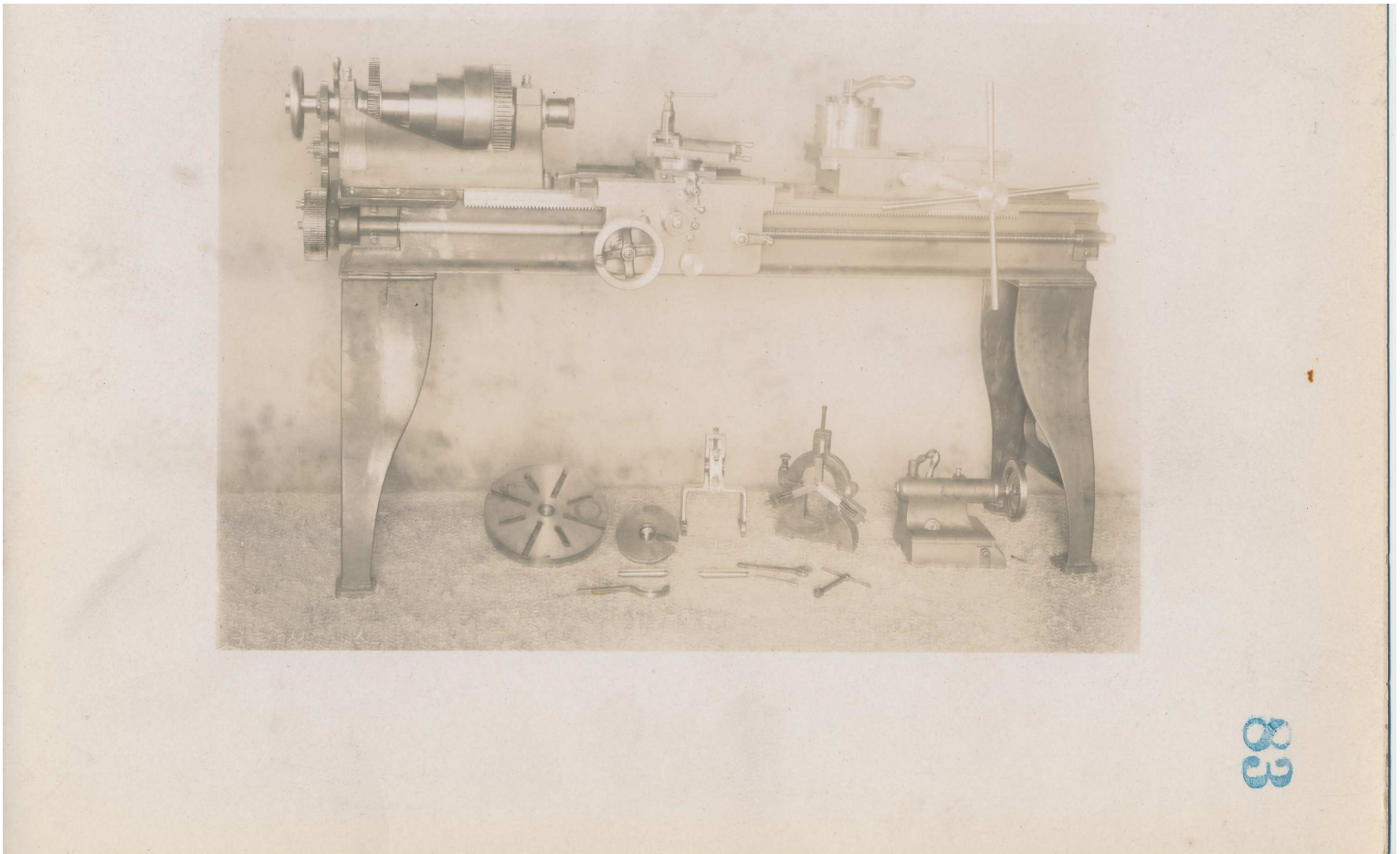
Fay & Scott, Dexter ME (Slide # 46, Image # 13199, Collection [Products - machine tools], tstamp [Wed Sep 12 13:28:14 EDT 2012])
No annotations

Original owned by Dexter Historical Society, Dexter Maine
Reproduced 6/2012 with permission
Duplication or use for commercial purposes prohibited



Slate Shed Iron Derrick.

87

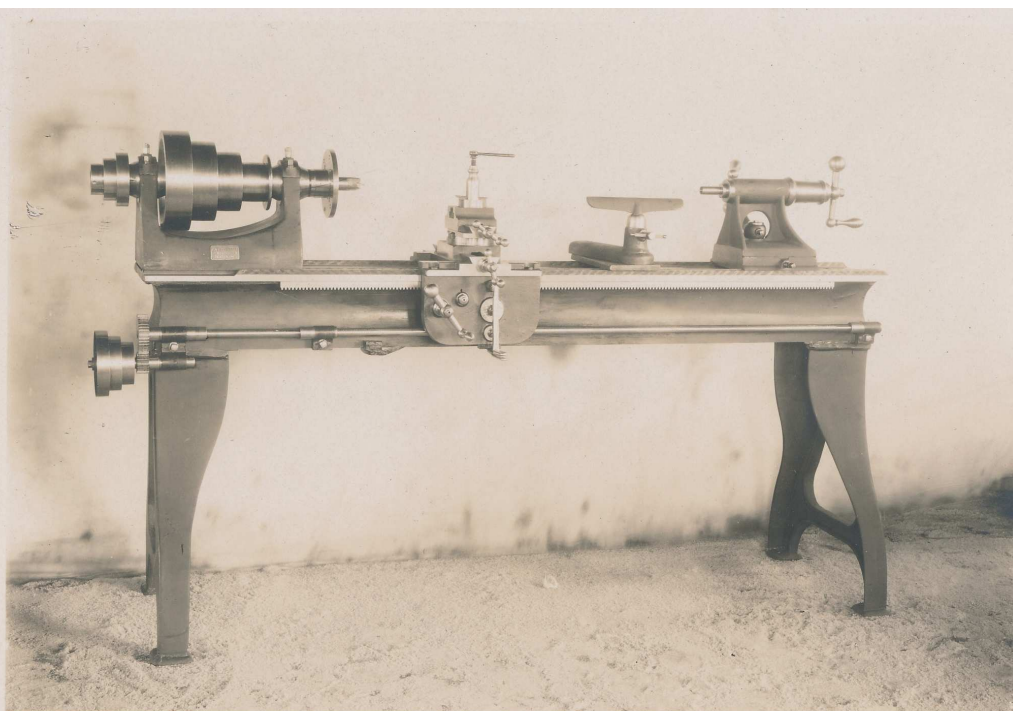


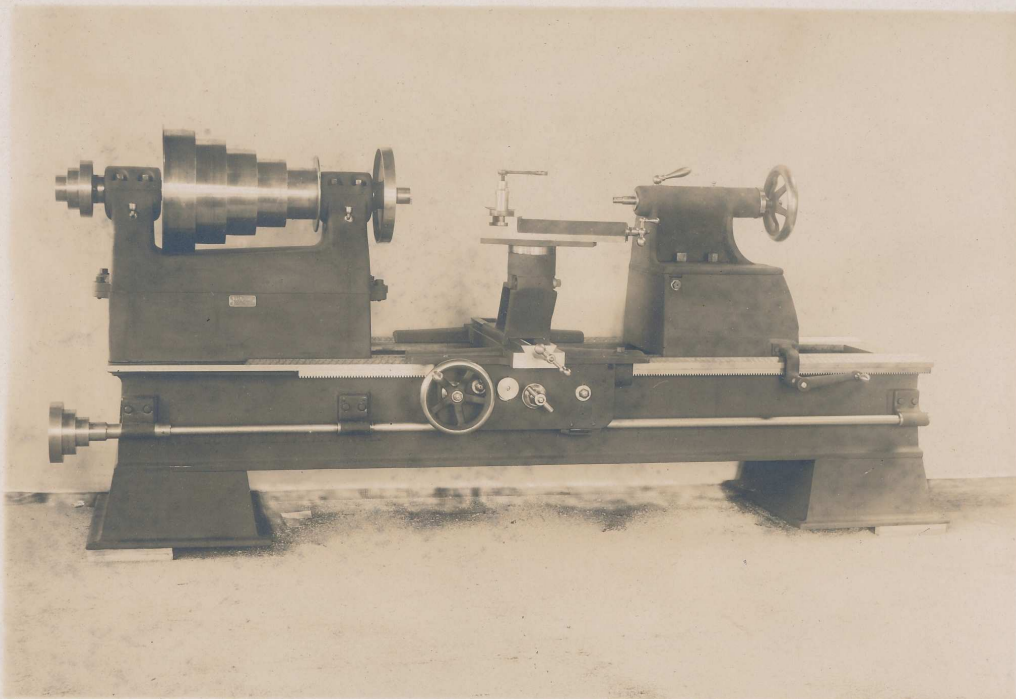
Fay & Scott, Dexter ME (Slide # 48, Image # 13203, Collection [Products - machine tools], tstamp [Wed Sep 12 13:28:14 EDT 2012])
No annotations

Original owned by Dexter Historical Society, Dexter Maine
Reproduced 6/2012 with permission
Duplication or use for commercial purposes prohibited

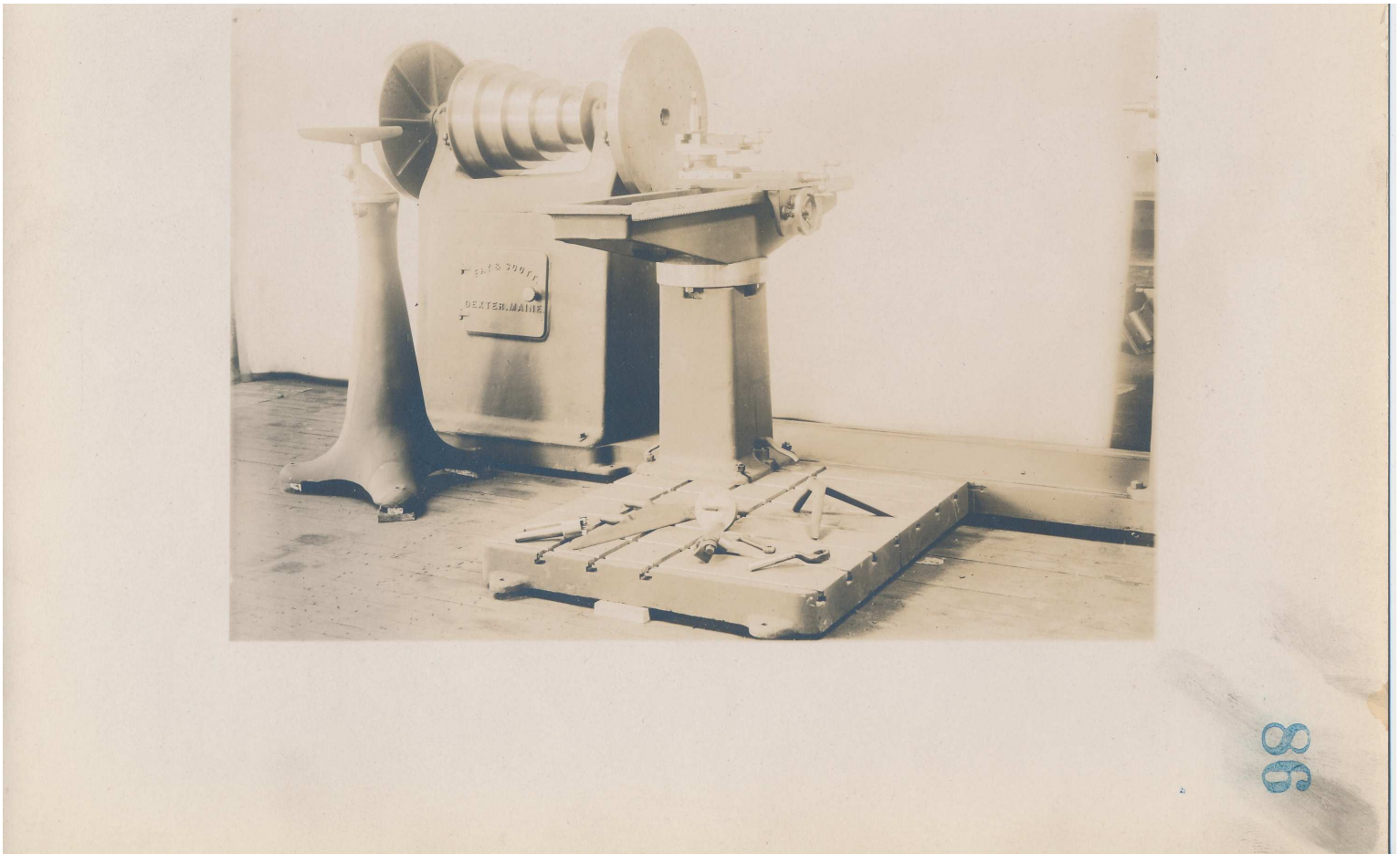


69



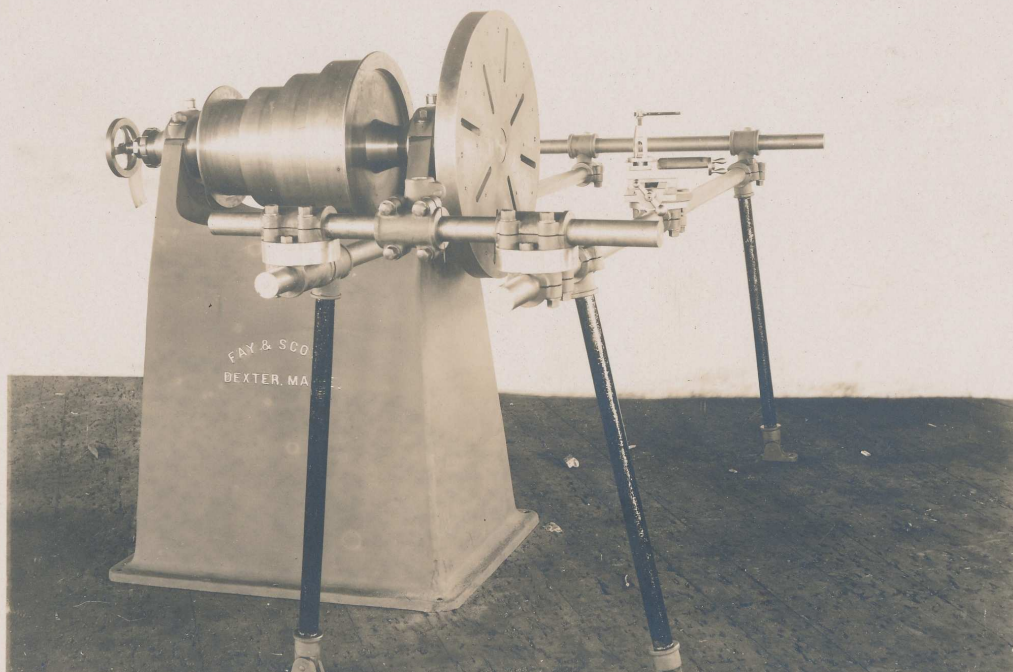


28

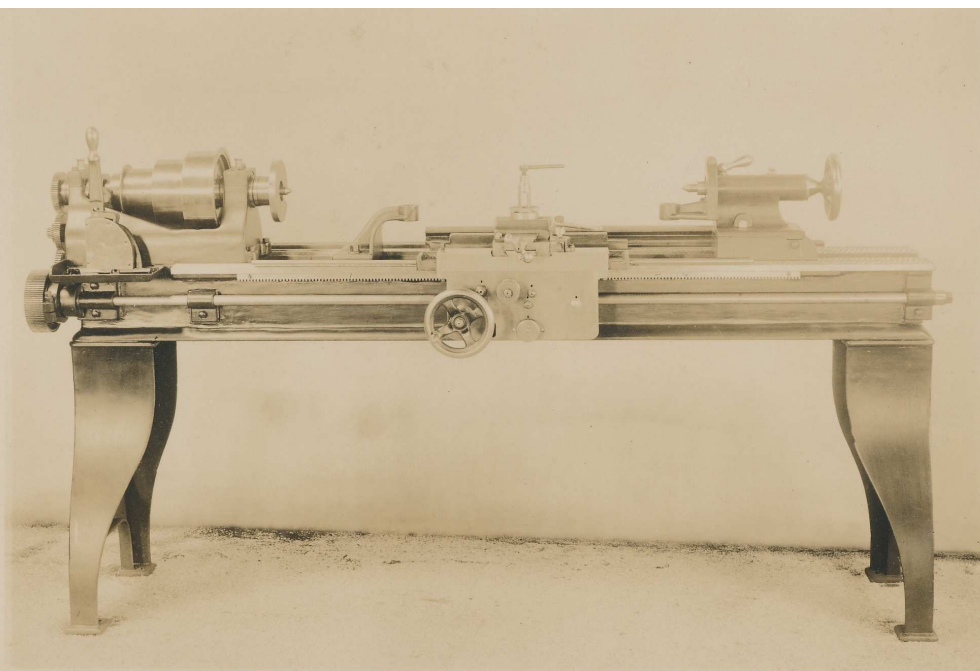


Fay & Scott, Dexter ME (Slide # 52, Image # 13207, Collection [Products - machine tools], tstamp [Wed Sep 12 13:28:14 EDT 2012])
No annotations

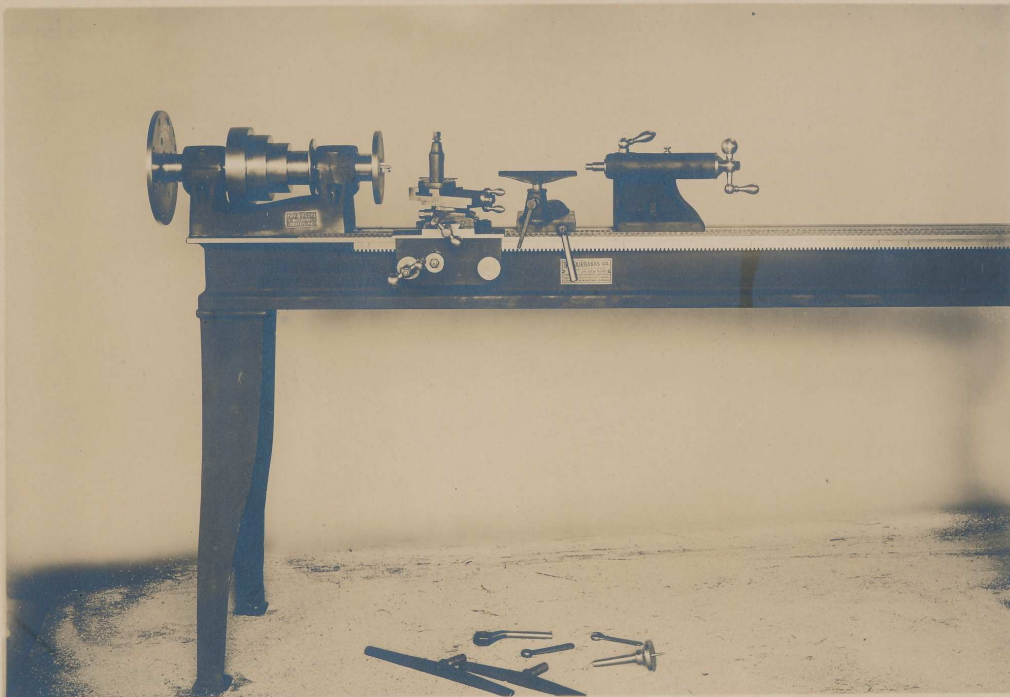
Original owned by Dexter Historical Society, Dexter Maine
Reproduced 6/2012 with permission
Duplication or use for commercial purposes prohibited



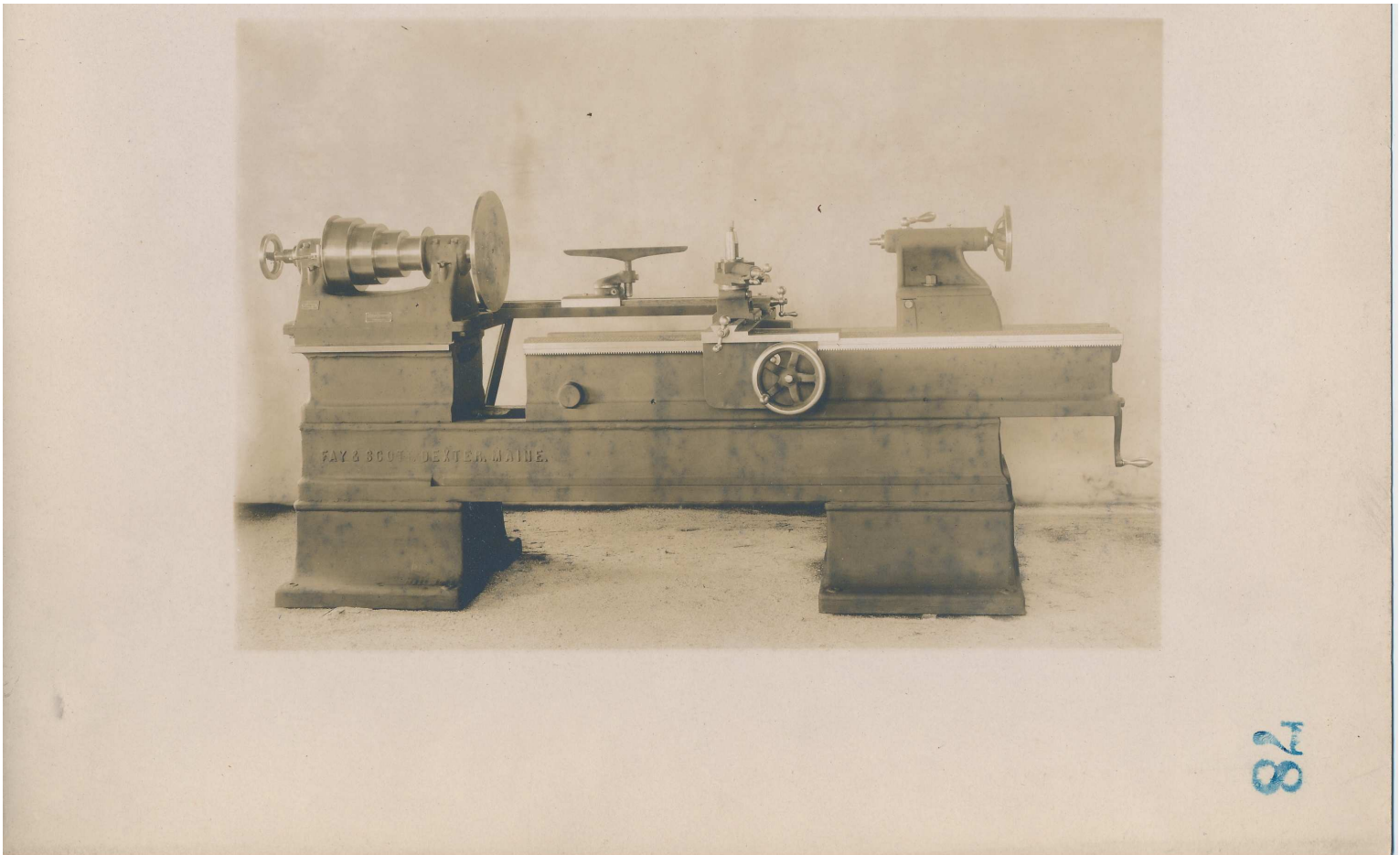
31



Fay & Scott, Dexter ME (Slide # 54, Image # 13209, Collection [Products - machine tools], tstamp [Wed Sep 12 13:28:14 EDT 2012])
No annotations

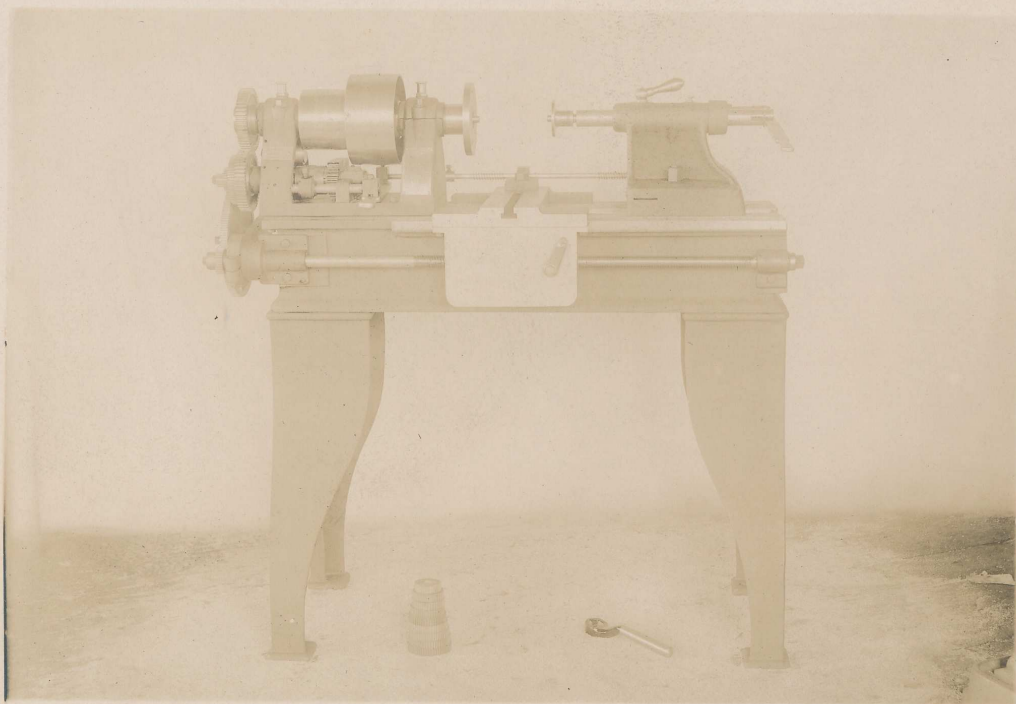


88



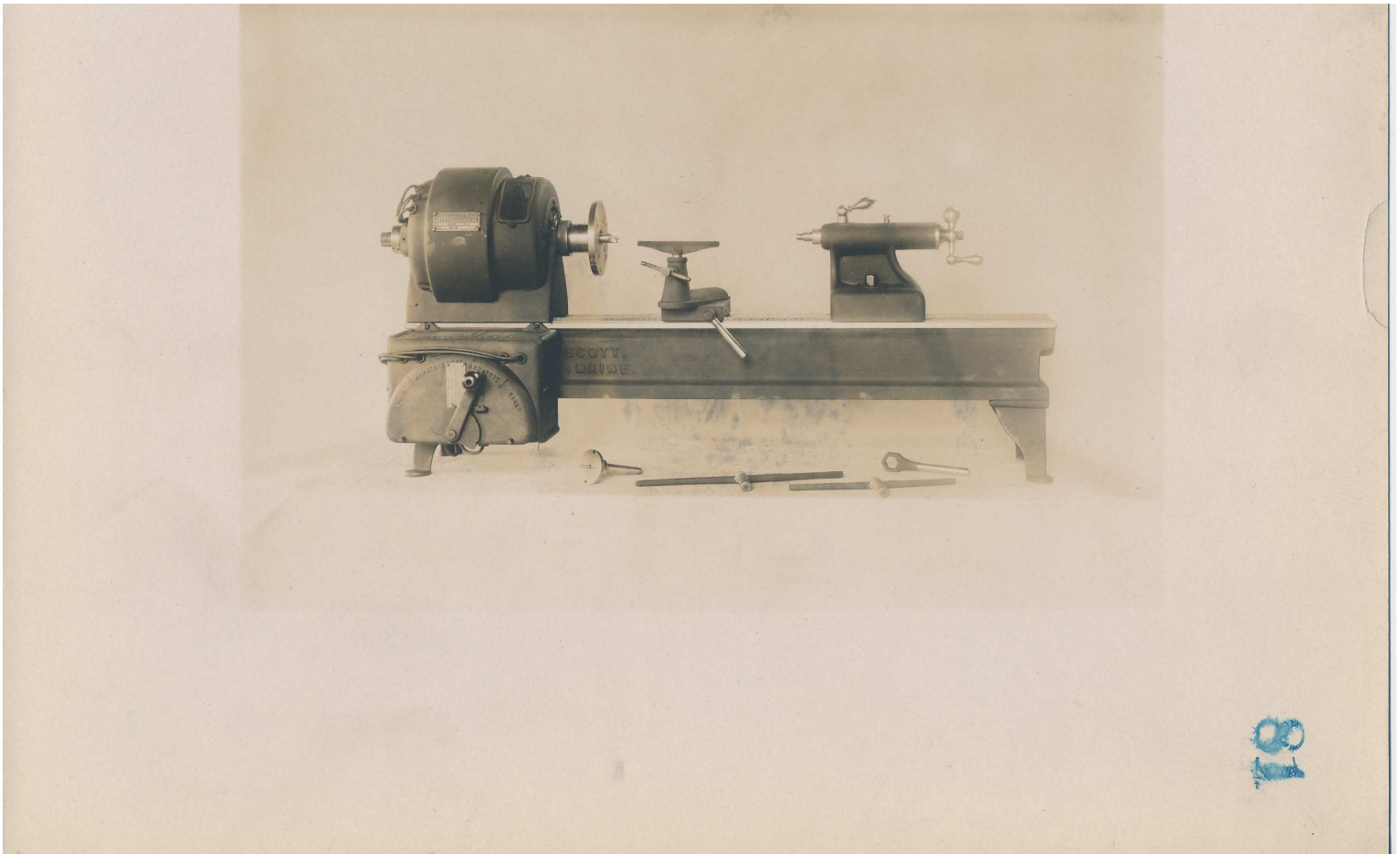
Fay & Scott, Dexter ME (Slide # 56, Image # 13212, Collection [Products - machine tools], tstamp [Wed Sep 12 13:28:14 EDT 2012])
No annotations

Original owned by Dexter Historical Society, Dexter Maine
Reproduced 6/2012 with permission
Duplication or use for commercial purposes prohibited



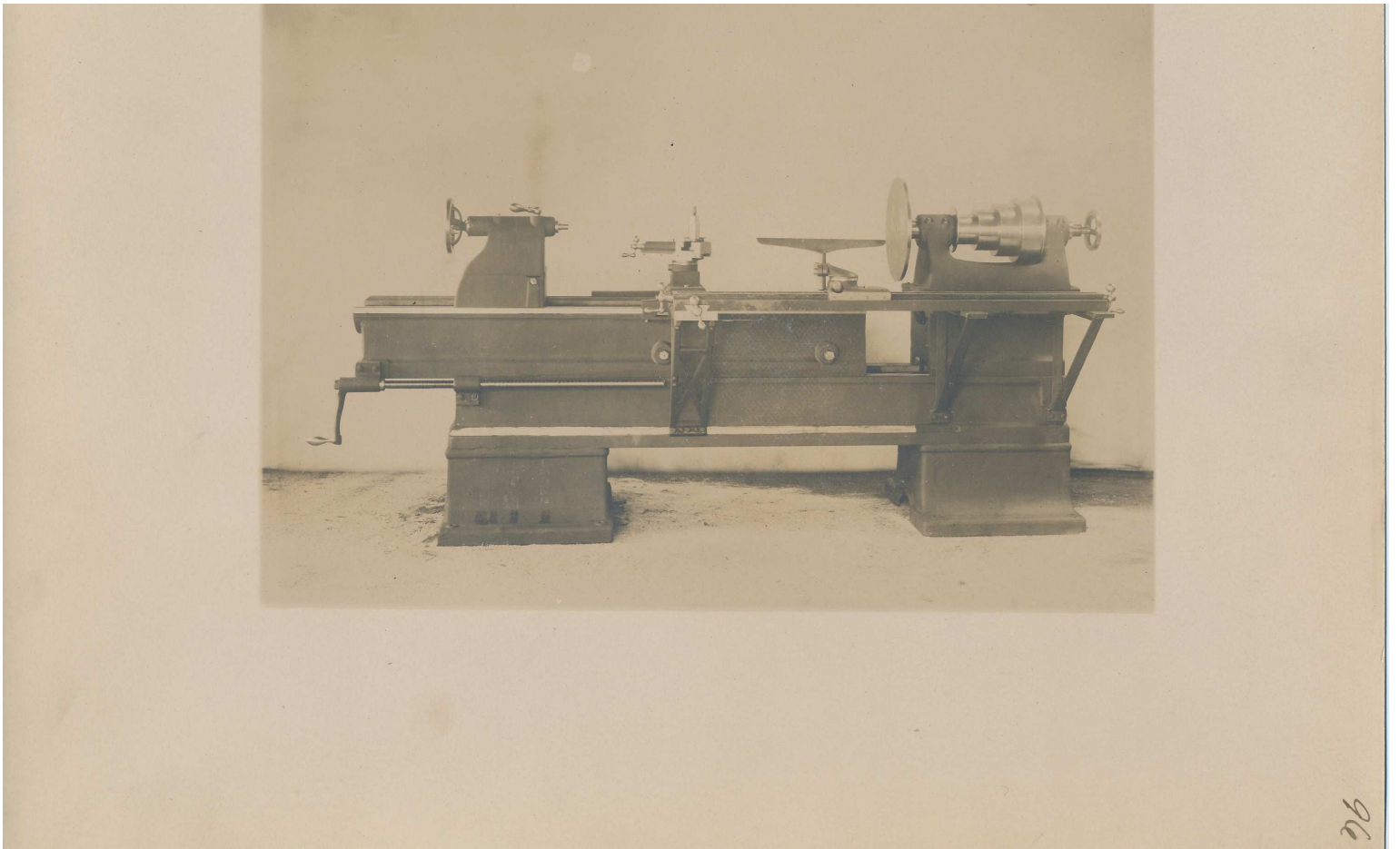
Solder Winding Machine, (W # 21).
Built for E.M.Lang Co., Portland, Maine, Nov. 28-08.

88



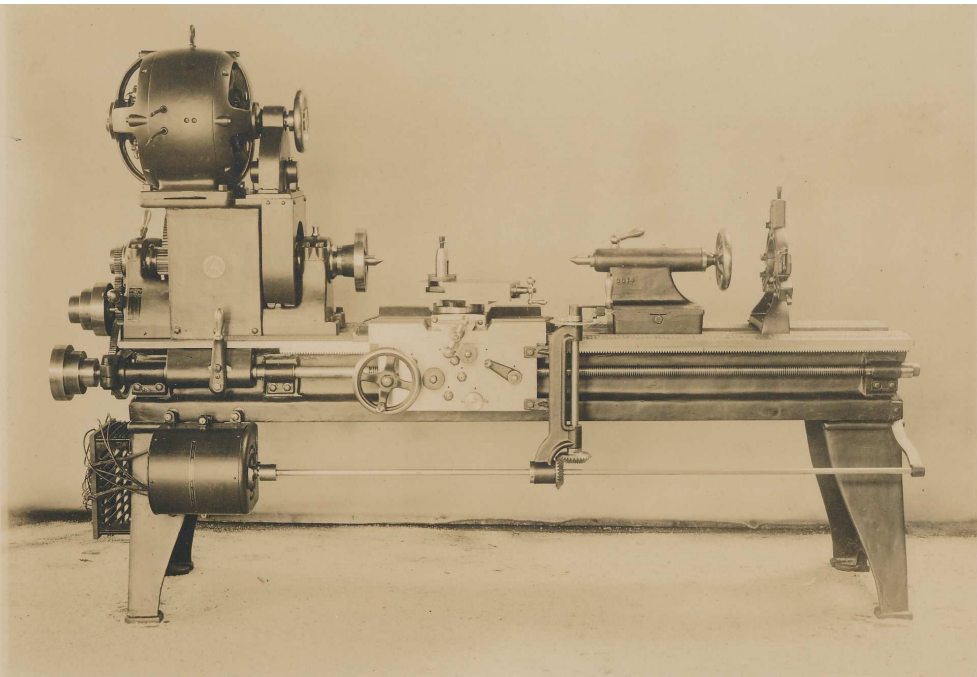
Fay & Scott, Dexter ME (Slide # 58, Image # 13214, Collection [Products - machine tools], tstamp [Wed Sep 12 13:28:14 EDT 2012])
No annotations

Original owned by Dexter Historical Society, Dexter Maine
Reproduced 6/2012 with permission
Duplication or use for commercial purposes prohibited

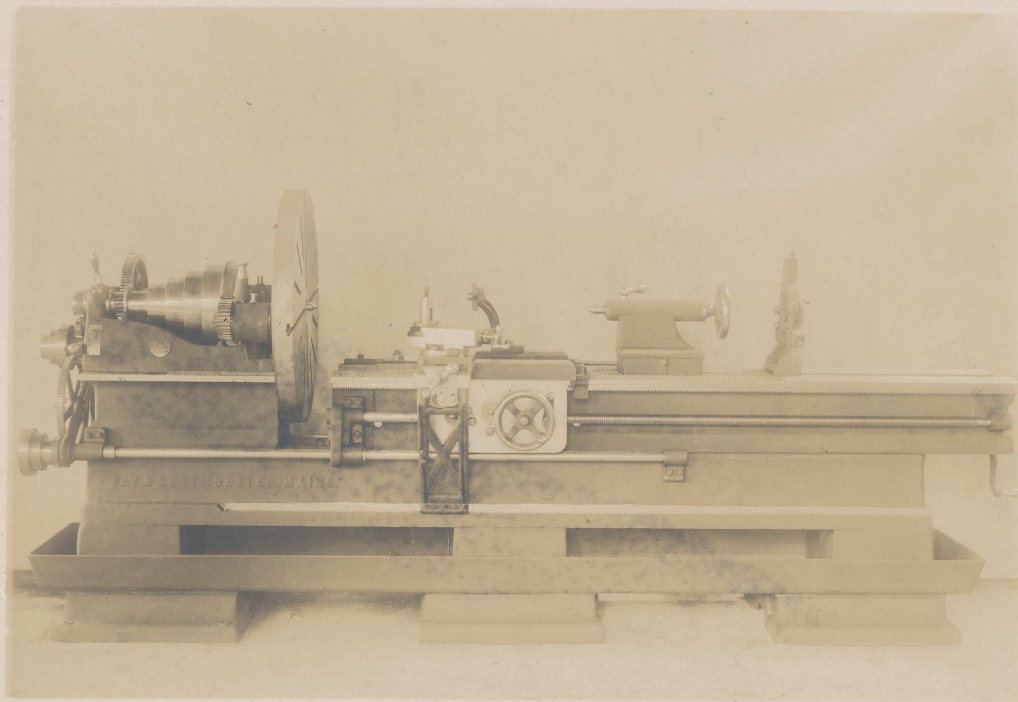


Fay & Scott, Dexter ME (Slide # 59, Image # 13215, Collection [Products - machine tools], tstamp [Wed Sep 12 13:28:14 EDT 2012])
No annotations

Original owned by Dexter Historical Society, Dexter Maine
Reproduced 6/2012 with permission
Duplication or use for commercial purposes prohibited

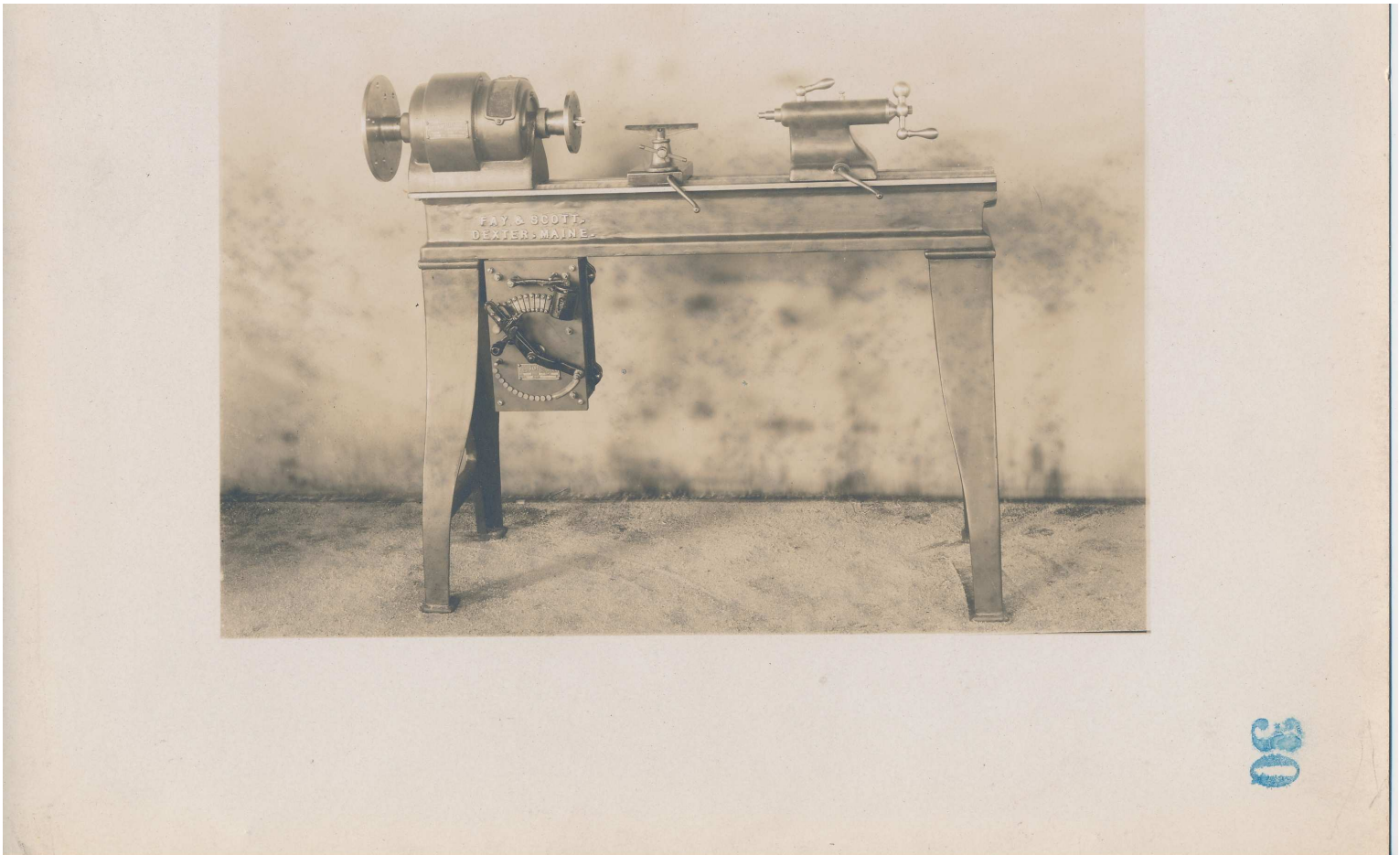


93



18X36 X 10 Extension Gap Engine Lathe.(DK 50)
 With Oil Pan,Taper Attachment,and Follower Rest.
 Lathe Built Sept.17-07,for (Prentiss) Navy Yard,Portsmouth,Va.

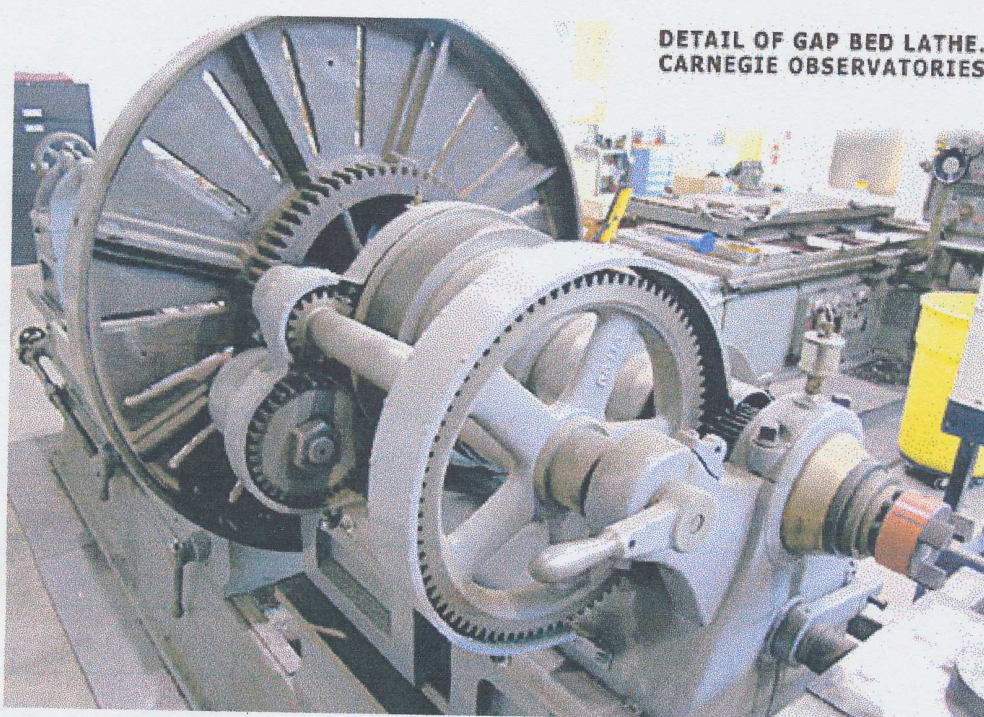
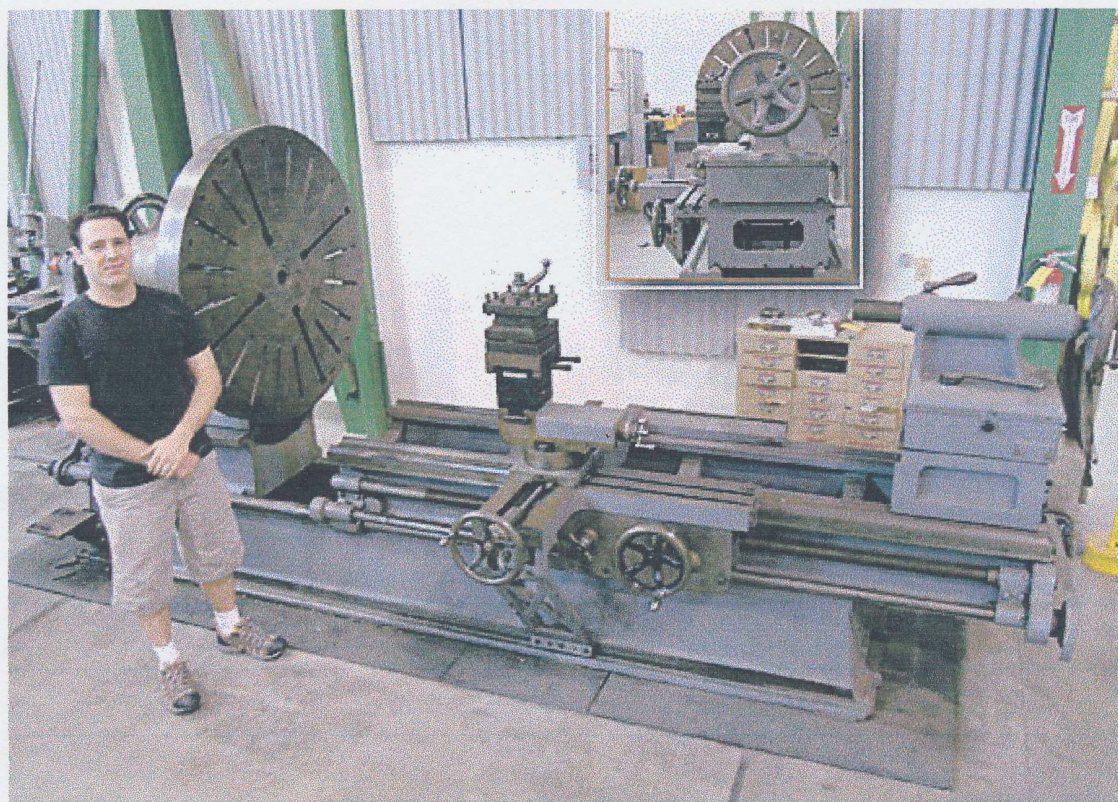




30

Fay & Scott, Dexter ME (Slide # 62, Image # 13219, Collection [Products - machine tools], tstamp [Wed Sep 12 13:28:14 EDT 2012])
No annotations

Original owned by Dexter Historical Society, Dexter Maine
Reproduced 6/2012 with permission
Duplication or use for commercial purposes prohibited



Details of the Fay & Scott Gap Bed Lathe

This is a pre war (WW1 not WW2) engine lathe with a 72"+ swing and extendable to a 15' stroke. It is ideal for large facing operations or shaft work.

Accessories:

- 3 – 9" spacers for head and tail stocks
- 3 – 6" spacers for head and tail stocks
- 1 – 48" face plate
- 1 – 32" face plate
- 1 – 24" Rohm three jaw chuck
- 1 – 24" four jaw chuck
- 1 - 12" diameter steady rest with 13" spacer
- 1 – cross slide extender
- 1 – 15" high cross slide spacer
- 1 – compound
- 1 - #5 Morse Taper tailstock
- Various tool post spacers



Fay & Scott, Dexter ME (Slide # 65, Image # gapbedlathes, Collection [Products - machine tools], tstamp [Wed Sep 12 13:28:14 EDT 2012])
No annotations

Original owned by Dexter Historical Society, Dexter Maine
Reproduced 6/2012 with permission
Duplication or use for commercial purposes prohibited