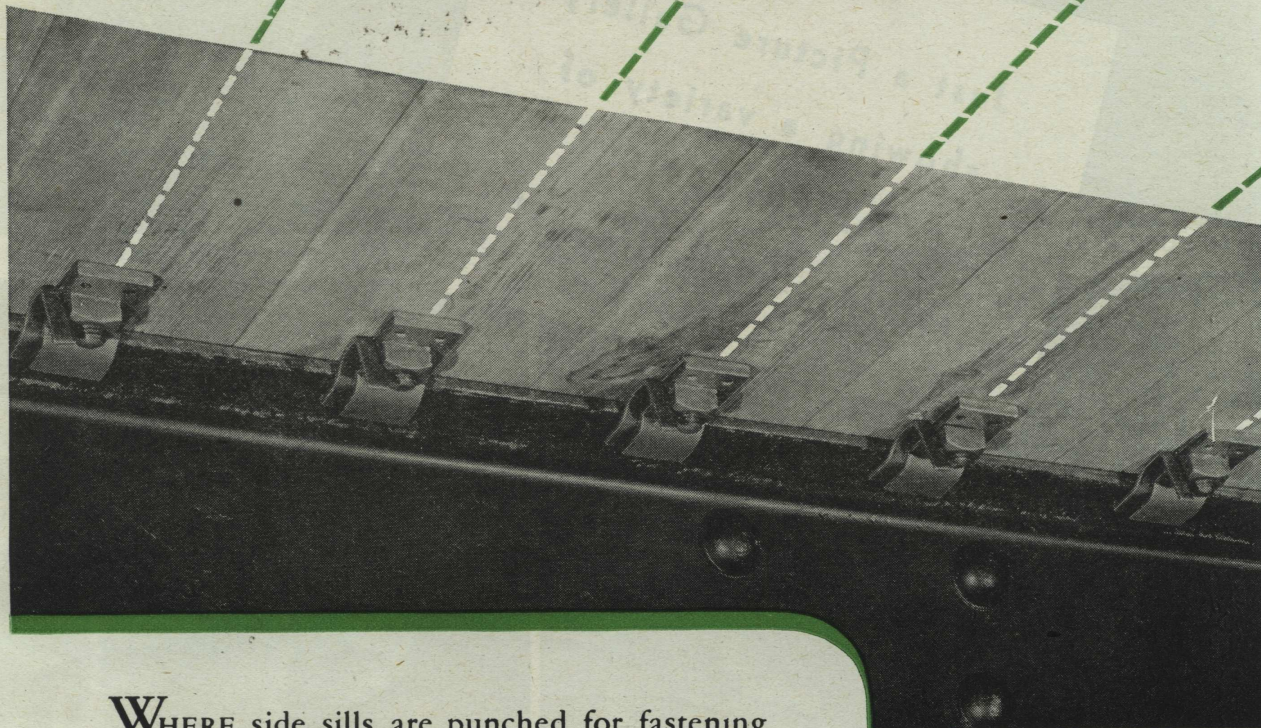


Down the CENTER line



WHERE side sills are punched for fastening floor boards, the corresponding holes in the boards are near the edge in many cases.

When M-F Lock-tight Floor Clips are used, they can be located right down the center lines of the boards.

"Down the center line" prevents tilting and warping of floor boards, a particularly important item today.

M-F Lock-tight Floor Clips maintain tight, smooth floors.

M-F FASTENINGS

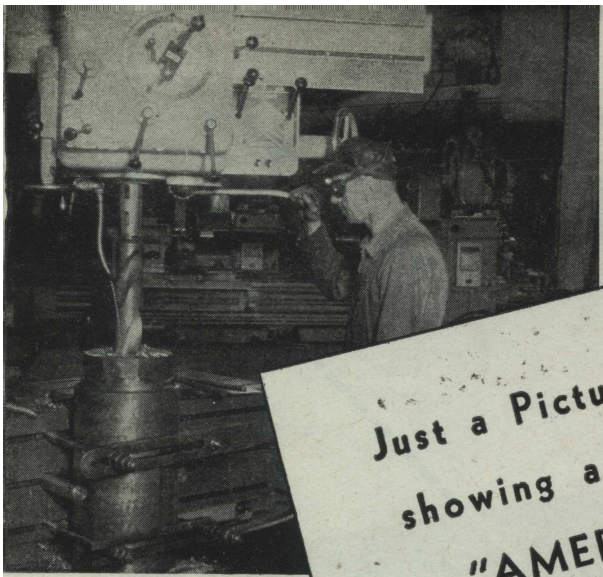
- Water-tight Bolts
- Lock Nuts
- Cotters
- Floor Clips
- Collar Bolts
- Threshold Plates

The M-F Lock-tight Floor Clip contains
an integral and self-contained nut lock.

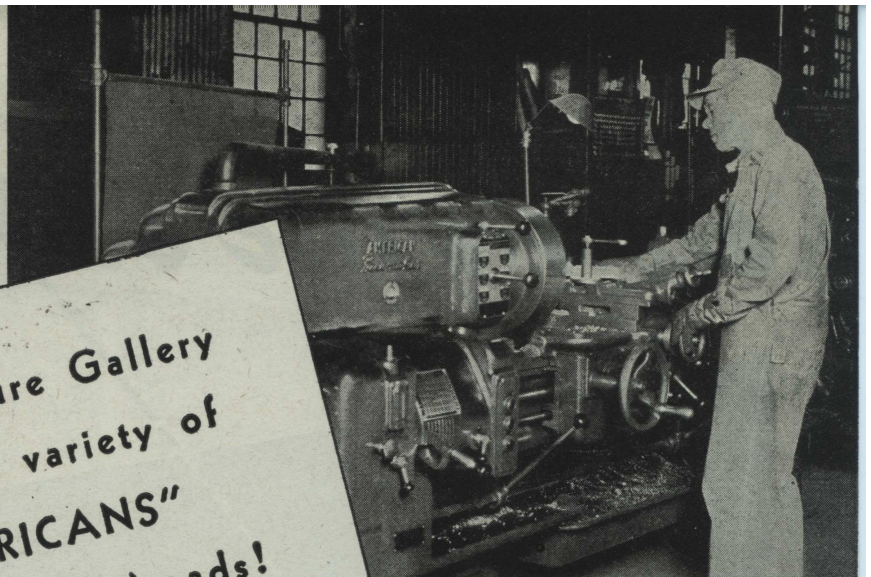


MACLEAN-FOGG LOCK NUT COMPANY

2649 N. Kildare Avenue, Chicago 39, Illinois • In Canada: The Holden Co., Ltd., Montreal

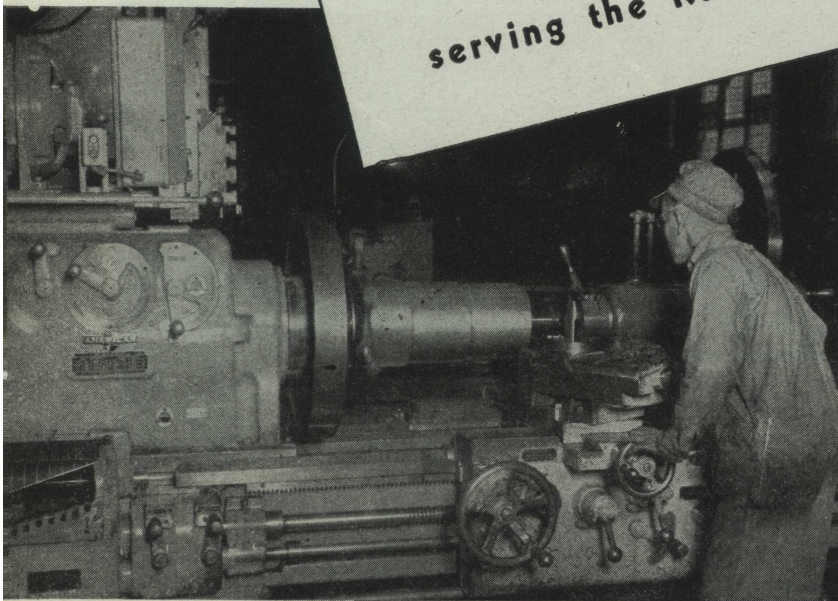


• Serving the U. P. R. R.

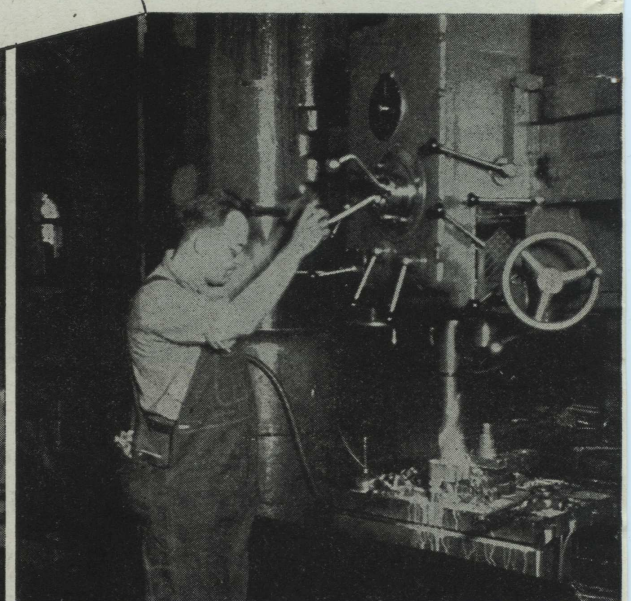


• Serving the C. & E. I. R. R.

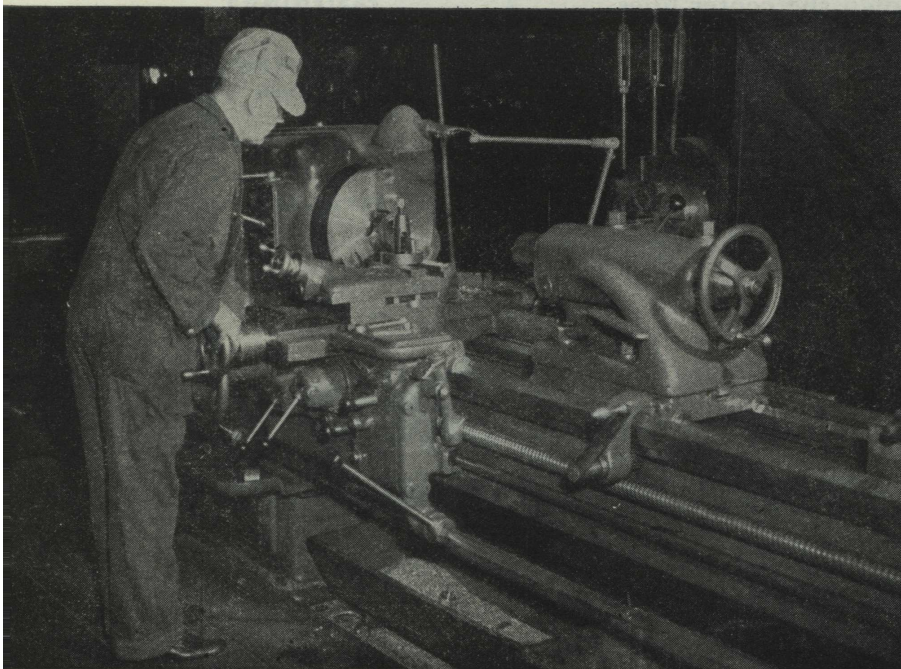
Just a Picture Gallery
showing a variety of
"AMERICANS"
serving the Railroads!



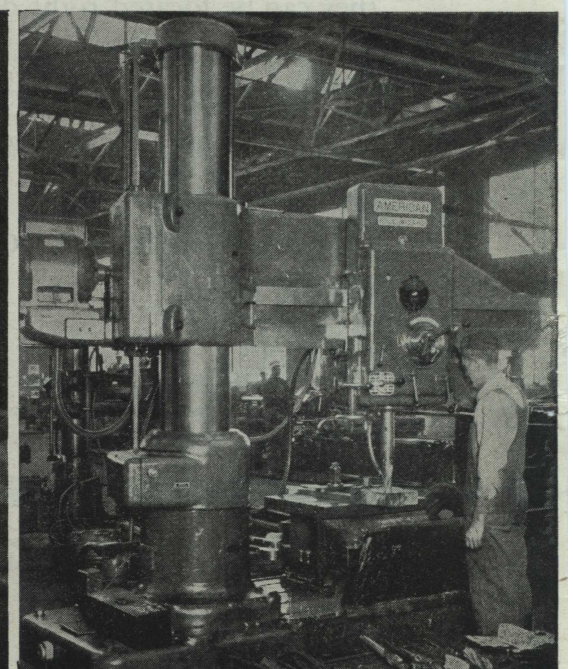
• Serving the U. P. R. R.



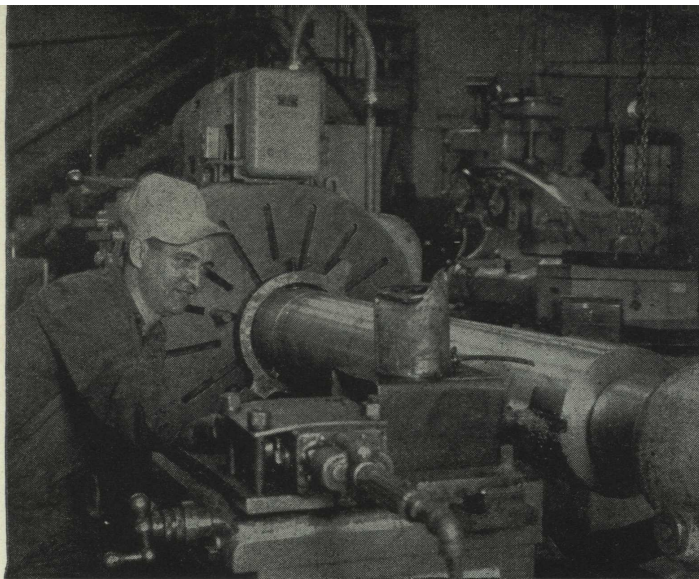
• Serving the C. B. & Q. R. R.



• Serving the B. & M. R. R.



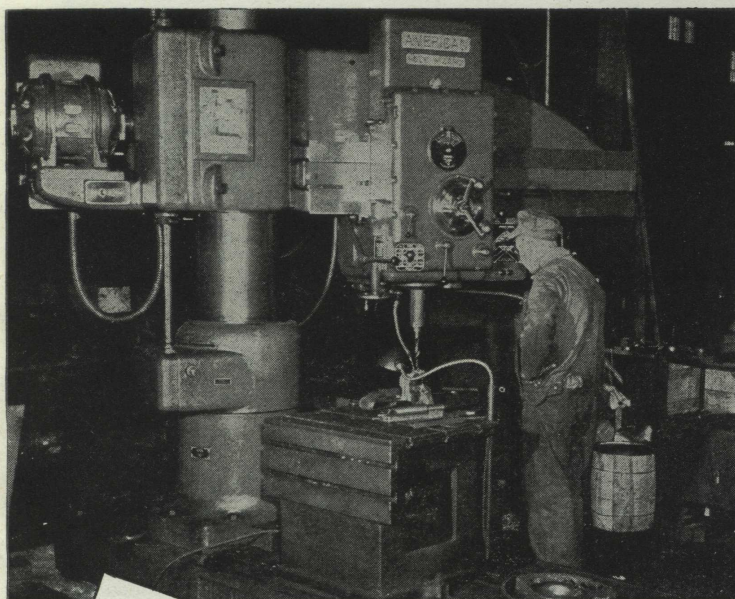
• Serving the Illinois Central R. R.



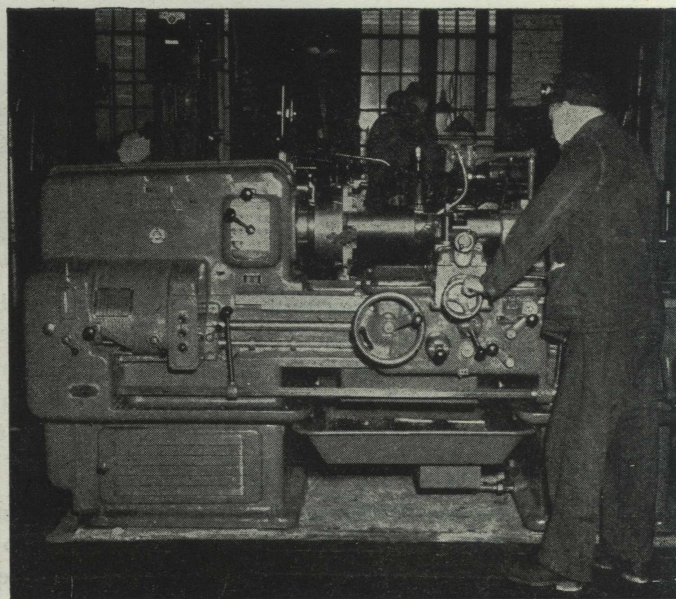
● Serving the U. P. R. R.



● Serving the N. P. R. R.



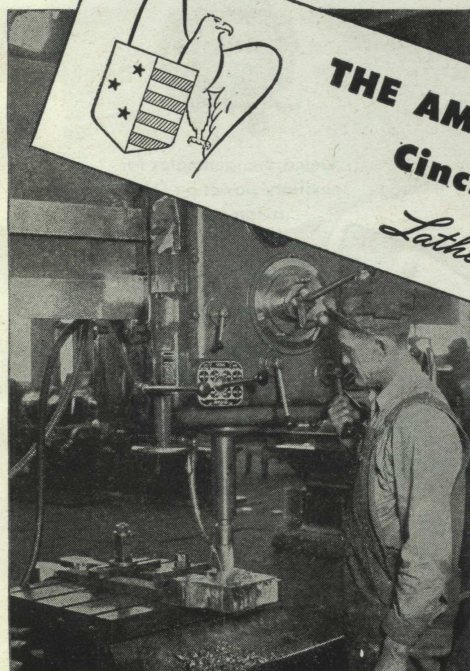
● Serving the B. & M. R. R.



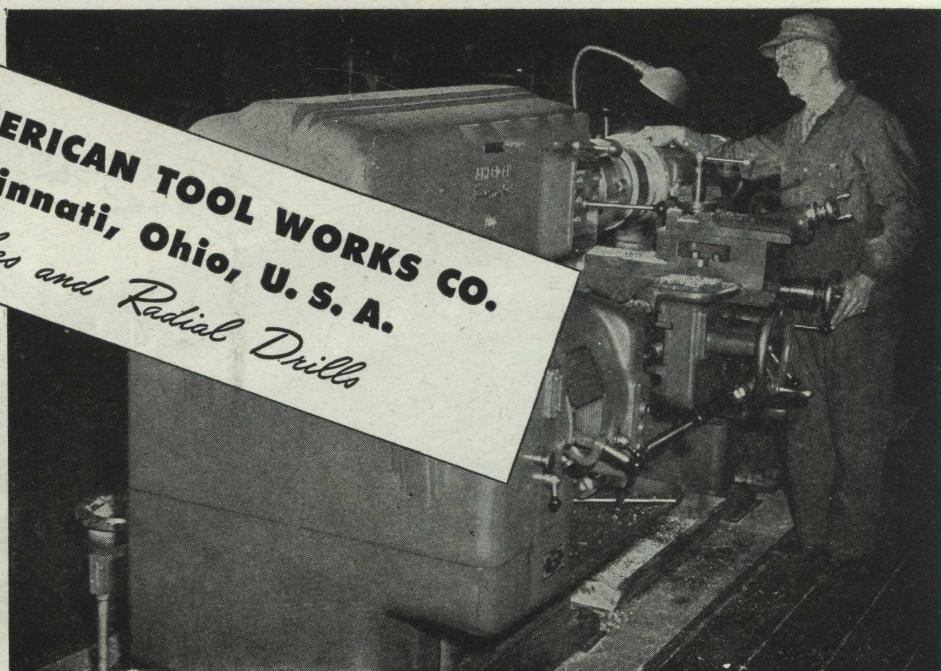
● Serving the Central Vermont R. R.



THE AMERICAN TOOL WORKS CO.
Cincinnati, Ohio, U. S. A.
Lathes and Radial Drills



● Serving the Illinois Central R. R.



● Serving the B. & M. R. R.

Hauled by a Diesel . . .

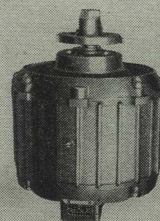
cooled by a

DELCO

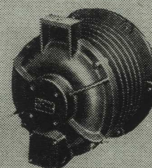
Delco compressor motor
for car air-conditioning.

Delco compressor motors have been specified for the air-conditioning equipment on many of America's modern trains. Coincidentally, Delco motors perform other cooling jobs in the Diesel locomotives that haul these trains. They drive blowers to dissipate heat in traction motors and to cool grids during electric braking.

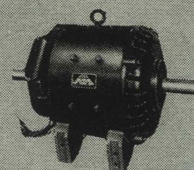
Whatever the assignment, Delco railroad motors and generators are designed with a single purpose: to provide unfailing service with a minimum of maintenance.



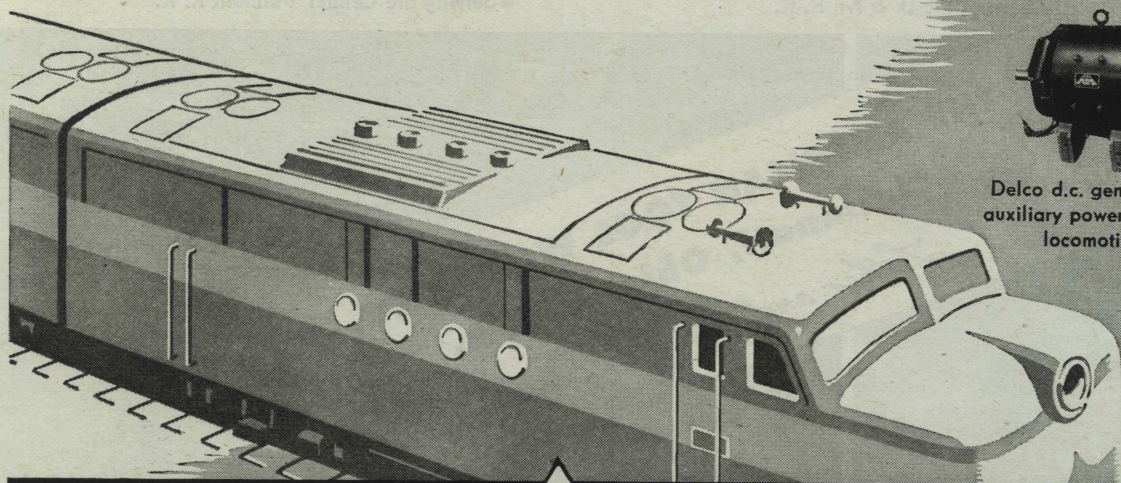
Delco 12-h.p. blower
motor for cooling grids during
electric braking.



Delco 5-h.p. blower motor
for cooling traction motors.



Delco d.c. generator for
auxiliary power on Diesel
locomotives.



DELCO

DIVISION OF GENERAL



MOTORS

MOTORS CORPORATION